

Product Tips and Features

Headers & Junctions

Header & Junction blocks are used to provide distribution or connection points in a fluid power piping system. Headers provide a common through port for multiple inlet or outlet ports at each station to be neatly connected together. Junctions offer termination points to join individual lines in order to change direction or combine/split flow with other lines at each station. In both cases they provide support to the piping system.

1. Standard materials are Aluminum, Ductile Iron, and Steel. Other materials including Stainless Steel, Brass and Nylon[®] are optionally available.
2. Special Finishes including Black Oxide, Electroless Nickel Plating or Anodizing are optionally available.
3. UNC mounting bolt kits are supplied as standard.
4. Top & Side mounting is standard.
5. Internal galleries are equal to or greater than the nominal port connection in order to minimize pressure drops and fluid velocities.
6. No variation in design layout for each Model regardless of Port Code.
7. Both Headers & Junctions are offered in odd and even number of stations up to 10. Contact factory for models with more stations.
8. Headers are offered in 0°, 90° and 180° configurations as standard. Special orders can be placed for the 270° configurations.
9. Junctions are offered in 90°, 180° and 270° configurations as standard.
10. Models with smaller ports than shown are available as non-standards. Contact factory for part numbers.
11. Optional spacing between ports available upon request. Contact factory for part numbers.
12. Optional port sizes and types such as Metric, BSPP and SAE Flanges Code 61 or 62 are available on request. Contact factory for part numbers.
13. Some models of Twin Headers and Junctions are available as a special. Contact factory for part numbers.

WE RESERVE THE RIGHT TO DISCONTINUE MODELS, OR CHANGE SPECIFICATIONS WITHOUT NOTICE OR INCURRING OBLIGATION

Lynch Products Can Be Modified to Suit Your Application

Phone: 1 (888) 626-4365 or + 1 (905) 363-2400 Fax: 1 (800) 263-5807 www.lynch.ca sales@lynch.ca

Index

Headers & Junctions

Headers - Layout & Part Number System.....	7.01.01
Headers - Dimensional Data.....	7.01.02
Junctions - Layout & Part Number System.....	7.01.03
Junctions - Dimensional Data	7.01.04
Compact Headers - Layout & Part Number System	7.02.01
Compact Junctions - Layout & Part Number System.....	7.02.02
Typical Mounting Styles and Cross Sections.....	7.03.01
Compact Mounting Styles and Cross Sections	7.03.02
Non Standard Header Options & Ordering Information.....	7.99.01
Dual Headers & Junctions.....	Consult Factory

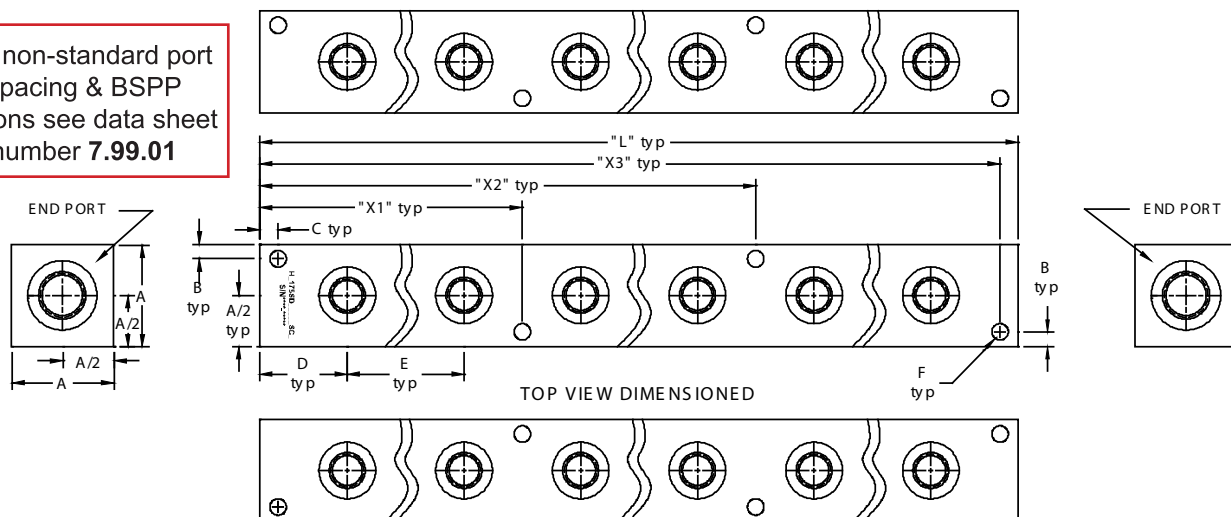
WE RESERVE THE RIGHT TO DISCONTINUE MODELS, OR CHANGE SPECIFICATIONS WITHOUT NOTICE OR INCURRING OBLIGATION

Lynch Products Can Be Modified to Suit Your Application

Phone: 1 (888) 626-4365 or +1 (905) 363-2400 Fax: 1 (800) 263-5807 www.lynch.ca sales@lynch.ca

Headers - Layout & Part Number System

For non-standard port spacing & BSPP options see data sheet number **7.99.01**

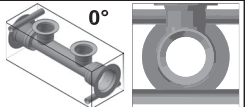
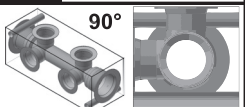
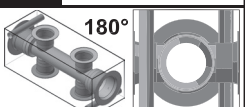
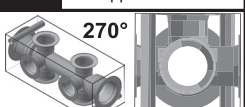


To order a standard product, select one CODE from each Column. Port sizes are linked to material size and must be selected from the same row for standard product.

STANDARD EXAMPLE Aluminum Header with SAE 8 End Ports and SAE 6 Ports Out Top & One Side: HA175SD090**SCU

To special order a non-standard port combination, select any port code above the stock material size row.

NON-STANDARD EXAMPLE Ductile Header with SAE 6 End Ports and SAE 6 Ports Out Top & One Side: HD175SC090**SCU

TYPE	MATERIAL	MATERIAL SIZE	END PORT CODE	PORT ORIENTATION	NO. of STATIONS	SIDE PORT CODE	MT'G
H E A D E R	Standard Options	CODE SIZE	CODE TYPE	CODE STYLE	01 to 10	CODE TYPE	U STD
	A Aluminum	100 1.00" x 1.00"	NA 1/8" NPTF	000 One Side Only		NR 1/16" NPTF	TOP & SIDE MTG HOLES
	F Steel					NA 1/8" NPTF	
	Non-Standard Options						
	D Ductile	150 1.50" x 1.50"	NB 1/4" NPTF				
	B Brass						
	6 316 Stainless Steel					SB SAE 4	
	3 303 Stainless Steel	175 1.75" x 1.75"	SC SAE 6 NC 3/8" NPTF	090 Top & One Side		NB 1/4" NPTF	
	Available on Special Order Only					SC SAE 6 NC 3/8" NPTF	
		175 1.75" x 1.75"	SD SAE 8 ND 1/2" NPTF			SD SAE 8 ND 1/2" NPTF	
		200 2.00" x 2.00"	SF SAE 12 NF 3/4" NPTF	180 Two Opposite Sides		SF SAE 12 NF 3/4" NPTF	
		250 2.50" x 2.50"	SH SAE 16 NH 1" NPTF			SH SAE 16 NH 1" NPTF	
	Standard Options	300 3.00" x 3.00"	SI SAE 20 NI 1 1/4" NPTF	270 Top & Two Opposite Sides	01 to 09	SI SAE 20 NI 1 1/4" NPTF	
	A Aluminum						
	D Ductile	350 3.50" x 3.50"	SJ SAE 24 NJ 1 1/2" NPTF	Available on Special Order Only		SJ SAE 24 NJ 1 1/2" NPTF	
	Non-Standard Options				01 to 07		
	6 316 Stainless Steel						
	3 303 Stainless Steel	400 4.00" x 4.00"	SK SAE 32 NK 2" NPTF				
	Available on Special Order Only						

WE RESERVE THE RIGHT TO DISCONTINUE MODELS, OR CHANGE SPECIFICATIONS WITHOUT NOTICE OR INCURRING OBLIGATION

Lynch Products Can Be Modified to Suit Your Application

Phone: 1 (888) 626-4365 or +1 (905) 363-2400 Fax: 1 (800) 263-5807 www.lynch.ca sales@lynch.ca

Header Dimensional Data

1.00" HEADER

A	B	C	D	E	F
1.00	0.16	0.31	1.00	1.25	0.20

Mounting Kit includes:
2 or 4 SHCS 10-24 UNC x 1.50" Long

1.50" HEADER

A	B	C	D	E	F
1.50	0.25	0.31	1.13	1.38	0.27

Mounting Kit includes:
2 or 4 SHCS 1/4"-20 UNC x 2.00" Long

1.75" HEADER - STANDARD FLOW

A	B	C	D	E	F
1.75	0.25	0.31	1.06	1.75	0.27

Mounting Kit includes:
2 or 4 SHCS 1/4"-20 UNC x 2.25" Long

1.75" HEADER - HIGH FLOW

A	B	C	D	E	F
1.75	0.25	0.31	1.50	2.00	0.27

Mounting Kit includes:
2 or 4 SHCS 1/4"-20 UNC x 2.25" Long

2.00" HEADER

A	B	C	D	E	F
2.00	0.25	0.31	1.50	2.38	0.27

Mounting Kit includes:
2 or 4 SHCS 1/4"-20 UNC x 2.50" Long

2.50" HEADER

A	B	C	D	E	F
2.50	0.28	0.38	1.81	3.25	0.34

Mounting Kit includes:
2 or 4 SHCS 5/16"-18 UNC x 3.00" Long

3.00" HEADER

A	B	C	D	E	F
3.00	0.34	0.38	2.00	3.75	0.41

Mounting Kit includes:
2 or 4 SHCS 3/8"-16 UNC x 3.75" Long

3.50" HEADER

A	B	C	D	E	F
3.50	0.41	0.50	2.25	4.00	0.53

Mounting Kit includes:
2 or 4 SHCS 1/2"-13 UNC x 4.50" Long

4.00" HEADER

A	B	C	D	E	F
4.00	0.41	2.00	4.00	5.00	0.53

Mounting Kit includes:
2 or 4 SHCS 1/2"-13 UNC x 5.00" Long

No. of Stations	1	2	3	4	5	6	7	8	9	10
Dim. "L"	2.00	3.25	4.50	5.75	7.00	8.25	9.50	10.75	12.00	13.25
X1	*	*	*	*	2.88	2.88	2.88	4.13	4.13	4.13
X2	*	*	*	*	4.13	5.38	6.63	6.63	7.88	9.13
X3	1.38	2.63	3.88	5.13	6.38	7.63	8.88	10.13	11.38	12.63

No. of Stations	1	2	3	4	5	6	7	8	9	10
Dim. "L"	2.25	3.63	5.00	6.38	7.75	9.13	10.50	11.88	13.25	14.63
X1	*	*	*	*	3.19	3.19	3.19	4.56	4.56	4.56
X2	*	*	*	*	4.56	5.94	7.31	7.31	8.69	10.06
X3	1.94	3.31	4.69	6.06	7.44	8.81	10.19	11.56	12.94	14.31

No. of Stations	1	2	3	4	5	6	7	8	9	10
Dim. "L"	2.13	3.88	5.63	7.38	9.13	10.88	12.63	14.38	16.13	17.88
X1	*	*	*	*	3.69	3.69	3.69	5.44	5.44	5.44
X2	*	*	*	*	5.44	7.19	8.94	8.94	10.69	12.44
X3	1.81	3.56	5.31	7.06	8.81	10.56	12.31	14.06	15.81	17.56

No. of Stations	1	2	3	4	5	6	7	8	9	10
Dim. "L"	3.00	5.00	7.00	9.00	11.00	13.00	15.00	17.00	19.00	21.00
X1	*	*	*	*	4.50	4.50	4.50	6.50	6.50	6.50
X2	*	*	*	*	6.50	8.50	10.50	10.50	12.50	14.50
X3	2.69	4.69	6.69	8.69	10.69	12.69	14.69	16.69	18.69	20.69

No. of Stations	1	2	3	4	5	6	7	8	9	10
Dim. "L"	3.00	5.38	7.75	10.13	12.50	14.88	17.25	19.63	22.00	24.38
X1	*	*	*	*	5.06	5.06	5.06	7.44	7.44	7.44
X2	*	*	*	*	7.44	9.81	12.19	12.19	14.56	16.94
X3	2.69	5.06	7.44	9.81	12.19	14.56	16.94	19.31	21.69	24.06

No. of Stations	1	2	3	4	5	6	7	8	9	10
Dim. "L"	3.63	6.88	10.13	13.38	16.63	19.88	23.13	26.38	29.63	32.88
X1	*	*	*	*	6.69	6.69	6.69	9.94	9.94	9.94
X2	*	*	*	*	9.94	13.19	16.44	16.44	19.69	22.94
X3	3.25	6.50	9.75	13.00	16.25	19.50	22.75	26.00	29.25	32.50

No. of Stations	1	2	3	4	5	6	7	8	9	10
Dim. "L"	4.00	7.75	11.50	15.25	19.00	22.75	26.50	30.25	34.00	37.75
X1	*	*	*	*	7.63	7.63	7.63	11.38	11.38	11.38
X2	*	*	*	*	11.38	15.13	18.88	18.88	22.63	26.38
X3	3.63	7.38	11.13	14.88	18.63	22.38	26.13	29.88	33.63	37.38

No. of Stations	1	2	3	4	5	6	7	8	9
Dim. "L"	4.50	8.50	12.50	16.50	20.50	24.50	28.50	32.50	36.50
X1	*	*	*	*	8.25	8.25	8.25	12.25	12.25
X2	*	*	*	*	12.25	16.25	20.25	20.25	24.25
X3	4.00	8.00	12.00	16.00	20.00	24.00	28.00	32.00	36.00

No. of Stations	1	2	3	4	5	6	7
Dim. "L"	8.00	13.00	18.00	23.00	28.00	33.00	38.00
X1	*	*	*	*	11.50	11.50	11.50
X2	*	*	*	*	16.50	21.50	26.50
X3	6.00	11.00	16.00	21.00	26.00	31.00	36.00

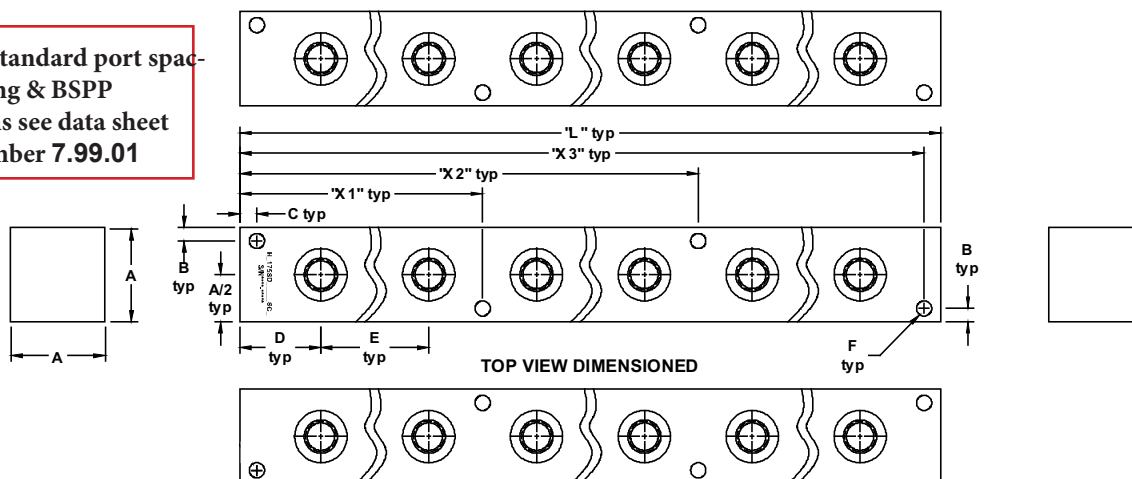
WE RESERVE THE RIGHT TO DISCONTINUE MODELS, OR CHANGE SPECIFICATIONS WITHOUT NOTICE OR INCURRING OBLIGATION

Lynch Products Can Be Modified to Suit Your Application

Phone: 1 (888) 626-4365 or +1 (905) 363-2400 Fax: 1 (800) 263-5807 www.lynch.ca sales@lynch.ca

Junctions - Layout & Part Number System

For non-standard port spacing & BSPP options see data sheet number 7.99.01

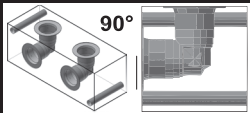
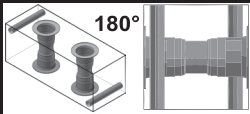
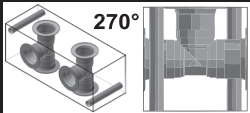


To order a standard product, select one CODE from each Column. Port sizes are linked to material size and must be selected from the same row for standard product.

STANDARD EXAMPLE Ductile Junction with SAE 16 Ports Out Top & Two Opposite Sides: JD300XX270**SHU

To special order a non-standard port code, select any port code above the stock material size row.

NON-STANDARD EXAMPLE Ductile Junction with SAE 6 Ports Out Top & One Side: JD175XX090**SCU

TYPE	MATERIAL	MATERIAL SIZE	END PORT CODE	PORT ORIENTATION	NO. of STATIONS	SIDE PORT CODE	MT'G
J JUNCTION	Standard Options	CODE SIZE	CODE TYPE	CODE STYLE	01 to 10	CODE TYPE	U STD
	A Aluminum	100 1.00" x 1.00"	XX NONE	090 Top & One Side		NR 1/16" NPTF	TOP & SIDE MTG HOLES
	F Steel					NA 1/8" NPTF	
	Non-Standard Options	150 1.50" x 1.50"				SB SAE 4	
	D Ductile			180 Two Opposite Sides		NB 1/4" NPTF	
	B Brass					SC SAE 6	
	6 316 Stainless Steel	175 1.75" x 1.75"				NC 3/8" NPTF	
	3 303 Stainless Steel			270 Top & Two Opposite Sides		SD SAE 8	
	Available on Special Order Only	175 1.75" x 1.75"				ND 1/2" NPTF	
		200 2.00" x 2.00"				SF SAE 12	
		250 2.50" x 2.50"				NF 3/4" NPTF	
						SH SAE 16	
J JUNCTION	Standard Options	300 3.00" x 3.00"			01 to 09	SI SAE 20	
	A Aluminum					NI 1 1/4" NPTF	
	D Ductile	350 3.50" x 3.50"			01 to 07	SJ SAE 24	
	Non-Standard Options					NJ 1 1/2" NPTF	
	6 316 Stainless Steel	400 4.00" x 4.00"					
	3 303 Stainless Steel						
	Available on Special Order Only						

WE RESERVE THE RIGHT TO DISCONTINUE MODELS, OR CHANGE SPECIFICATIONS WITHOUT NOTICE OR INCURRING OBLIGATION

Lynch Products Can Be Modified to Suit Your Application

Phone: 1 (888) 626-4365 or +1 (905) 363-2400 Fax: 1 (800) 263-5807 www.lynch.ca sales@lynch.ca

Junction Dimensional Data

1.00" JUNCTION

A	B	C	D	E	F
1.00	0.16	0.63	1.00	1.25	0.20

Mounting Kit includes:

2 or 4 SHCS 10-24 UNC x 1.50" Long

1.50" JUNCTION

A	B	C	D	E	F
1.50	0.25	0.31	1.13	1.38	0.27

Mounting Kit includes:

2 or 4 SHCS 1/4"-20 UNC x 2.00" Long

1.75" JUNCTION - STANDARD FLOW

A	B	C	D	E	F
1.75	0.25	0.31	1.06	1.75	0.27

Mounting Kit includes:

2 or 4 SHCS 1/4"-20 UNC x 2.25" Long

1.75" JUNCTION - HIGH FLOW

A	B	C	D	E	F
1.75	0.25	0.31	1.50	2.00	0.27

Mounting Kit includes:

2 or 4 SHCS 1/4"-20 UNC x 2.25" Long

2.00" JUNCTION

A	B	C	D	E	F
2.00	0.25	0.31	1.50	2.38	0.27

Mounting Kit includes:

2 or 4 SHCS 1/4"-20 UNC x 2.50" Long

2.50" JUNCTION

A	B	C	D	E	F
2.50	0.28	0.38	1.81	3.25	0.34

Mounting Kit includes:

2 or 4 SHCS 5/16"-18 UNC x 3.00" Long

3.00" JUNCTION

A	B	C	D	E	F
3.00	0.34	0.38	2.00	3.75	0.41

Mounting Kit includes:

2 or 4 SHCS 3/8"-16 UNC x 3.75" Long

3.50" JUNCTION

A	B	C	D	E	F
3.50	0.41	0.50	2.25	4.00	0.53

Mounting Kit includes:

2 or 4 SHCS 1/2"-13 UNC x 4.50" Long

4.00" JUNCTION

A	B	C	D	E	F
4.00	0.41	0.50	2.50	5.00	0.53

Mounting Kit includes:

2 or 4 SHCS 1/2"-13 UNC x 5.00" Long

No. of Stations	1	2	3	4	5	6	7	8	9	10
Dim. "L"	2.00	3.25	4.50	5.75	7.00	8.25	9.50	10.75	12.00	13.25
X1	*	*	*	*	2.88	2.88	2.88	4.13	4.13	4.13
X2	*	*	*	*	4.13	5.38	6.63	6.63	7.88	9.13
X3	1.38	2.63	3.88	5.13	6.38	7.63	8.88	10.13	11.38	12.63

No. of Stations	1	2	3	4	5	6	7	8	9	10
Dim. "L"	2.25	3.63	5.00	6.38	7.75	9.13	10.50	11.88	13.25	14.63
X1	*	*	*	*	3.19	3.19	3.19	4.56	4.56	4.56
X2	*	*	*	*	4.56	5.94	7.31	7.31	8.69	10.06
X3	1.94	3.31	4.69	6.06	7.44	8.81	10.19	11.56	12.94	14.31

No. of Stations	1	2	3	4	5	6	7	8	9	10
Dim. "L"	2.13	3.88	5.63	7.38	9.13	10.88	12.63	14.38	16.13	17.88
X1	*	*	*	*	3.69	3.69	3.69	5.44	5.44	5.44
X2	*	*	*	*	5.44	7.19	8.94	8.94	10.69	12.44
X3	1.81	3.56	5.31	7.06	8.81	10.56	12.31	14.06	15.81	17.56

No. of Stations	1	2	3	4	5	6	7	8	9	10
Dim. "L"	3.00	5.00	7.00	9.00	11.00	13.00	15.00	17.00	19.00	21.00
X1	*	*	*	*	4.50	4.50	4.50	6.50	6.50	6.50
X2	*	*	*	*	6.50	8.50	10.50	10.50	12.50	14.50
X3	2.69	4.69	6.69	8.69	10.69	12.69	14.69	16.69	18.69	20.69

No. of Stations	1	2	3	4	5	6	7	8	9	10
Dim. "L"	3.00	5.38	7.75	10.13	12.50	14.88	17.25	19.63	22.00	24.38
X1	*	*	*	*	5.06	5.06	5.06	7.44	7.44	7.44
X2	*	*	*	*	7.44	9.81	12.19	12.19	14.56	16.94
X3	2.69	5.06	7.44	9.81	12.19	14.56	16.94	19.31	21.69	24.06

No. of Stations	1	2	3	4	5	6	7	8	9	10
Dim. "L"	3.63	6.88	10.13	13.38	16.63	19.88	23.13	26.38	29.63	32.88
X1	*	*	*	*	6.69	6.69	6.69	9.94	9.94	9.94
X2	*	*	*	*	9.94	13.19	16.44	16.44	19.69	22.94
X3	3.25	6.50	9.75	13.00	16.25	19.50	22.75	26.00	29.25	32.50

No. of Stations	1	2	3	4	5	6	7	8	9	10
Dim. "L"	4.00	7.75	11.50	15.25	19.00	22.75	26.50	30.25	34.00	37.75
X1	*	*	*	*	7.63	7.63	7.63	11.38	11.38	11.38
X2	*	*	*	*	11.38	15.13	18.88	18.88	22.63	26.38
X3	3.63	7.38	11.13	14.88	18.63	22.38	26.13	29.88	33.63	37.38

No. of Stations	1	2	3	4	5	6	7	8	9
Dim. "L"	4.50	8.50	12.50	16.50	20.50	24.50	28.50	32.50	36.50
X1	*	*	*	*	8.25	8.25	8.25	12.25	12.25
X2	*	*	*	*	12.25	16.25	20.25	20.25	24.25
X3	4.00	8.00	12.00	16.00	20.00	24.00	28.00	32.00	36.00

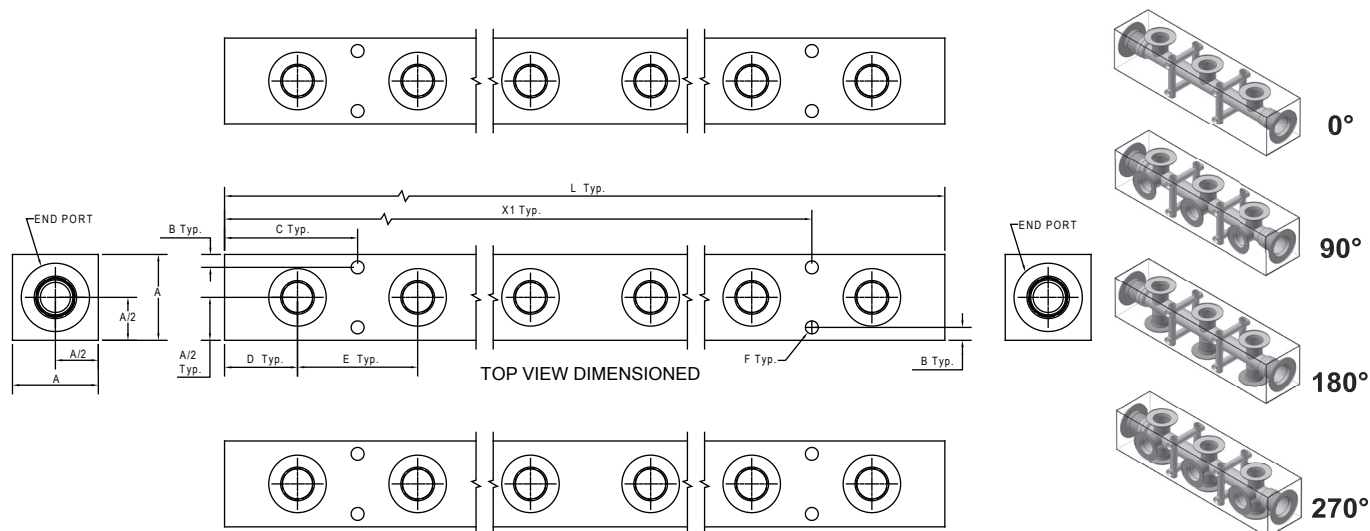
No. of Stations	1	2	3	4	5	6	7
Dim. "L"	5.00	10.00	15.00	20.00	25.00	30.00	35.00
X1	*	*	*	*	10.00	10.00	10.00
X2	*	*	*	*	15.00	20.00	25.00
X3	4.50	9.50	14.50	19.50	24.50	29.50	34.50

WE RESERVE THE RIGHT TO DISCONTINUE MODELS, OR CHANGE SPECIFICATIONS WITHOUT NOTICE OR INCURRING OBLIGATION

Lynch Products Can Be Modified to Suit Your Application

Phone: 1 (888) 626-4365 or +1 (905) 363-2400 Fax: 1 (800) 263-5807 www.lynch.ca sales@lynch.ca

Compact Headers - Layout & Part Number System



H1 COMPACT HEADER

A	B	C	D	E	F
0.88	0.14	0.69	0.38	0.63	0.13

No. of Stations	2	3	4	5	6	7	8	9	10
Dim. "L"	1.38	2.00	2.63	3.25	3.88	4.50	5.13	5.75	6.38
X1	N/A	1.31	1.94	2.56	3.19	3.81	4.44	5.06	5.69

H2 COMPACT HEADER

A	B	C	D	E	F
1.00	0.15	0.88	0.50	0.75	0.16

No. of Stations	2	3	4	5	6	7	8	9	10
Dim. "L"	1.75	2.50	3.25	4.00	4.75	5.50	6.25	7.00	7.75
X1	N/A	1.63	2.38	3.13	3.88	4.63	5.38	6.13	6.88

H3 COMPACT HEADER

A	B	C	D	E	F
1.25	0.18	1.06	0.63	0.88	0.19

No. of Stations	2	3	4	5	6	7	8	9	10
Dim. "L"	2.13	3.00	3.88	4.75	5.63	6.50	7.38	8.25	9.13
X1	N/A	1.94	2.81	3.69	4.56	5.44	6.31	7.19	8.06

H4 COMPACT HEADER

A	B	C	D	E	F
1.25	0.18	1.94	1.06	1.75	0.19

No. of Stations	2	3	4	5	6	7	8	9	10
Dim. "L"	3.88	5.63	7.38	9.13	10.88	12.63	14.38	16.13	17.88
X1	N/A	3.69	5.44	7.19	8.94	10.69	12.44	14.19	15.94

EXAMPLE Steel Compact Header with SAE 6 End Ports and SAE 4 Ports Out Two Opposite Sides: H4F125SC180**SB

TYPE	MATERIAL	MATERIAL SIZE	END PORT CODE	PORT ORIENTATION	NO. of STATIONS	SIDE PORT CODE
COMPACT HEADERS	CODE H1 Standard Options B Brass F Steel H2 Aluminum Non-Standard Options 6 316 Stainless Steel Available on Special Order Only H3 H4	CODE SIZE 088 .88" x .88" 100 1.00" x 1.00" 125 1.25" x 1.25"	CODE TYPE NA 1/8" NPTF NB 1/4" NPTF NC 3/8" NPTF SC SAE 6 NC 3/8" NPTF	CODE STYLE 000 0° One Side Only 090 90° Top & One Side 180 180° Two Opposite Sides 270 270° Top & Two Opposite Sides Available on Special Order Only	02 to 10	CODE TYPE NR 1/16" NPTF NA 1/8" NPTF NB 1/4" NPTF SB SAE 4 NB 1/4" NPTF

WE RESERVE THE RIGHT TO DISCONTINUE MODELS, OR CHANGE SPECIFICATIONS WITHOUT NOTICE OR INCURRING OBLIGATION

Lynch Products Can Be Modified to Suit Your Application

Phone: 1 (888) 626-4365 or +1 (905) 363-2400 Fax: 1 (800) 263-5807 www.lynch.ca sales@lynch.ca



A	C	D	E	F
1.25	0.31	1.00	1.00	0.28

No. of Stations	1	2	3	4	5	6	7	8	9	10
Dim. "L"	2.00	3.00	4.00	5.00	6.00	7.00	8.00	9.00	10.00	11.00
X1	1.69	2.69	3.69	4.69	5.69	6.69	7.69	8.69	9.69	10.69

A	C	D	E	F
1.50	0.38	1.13	1.50	0.34
	1.38	0.63		

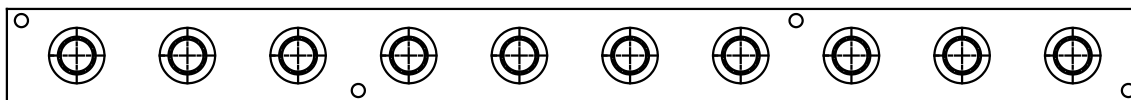
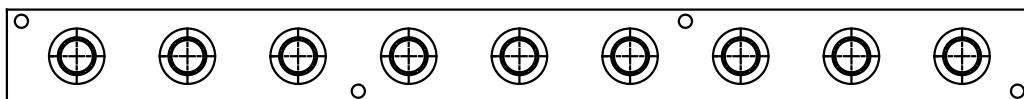
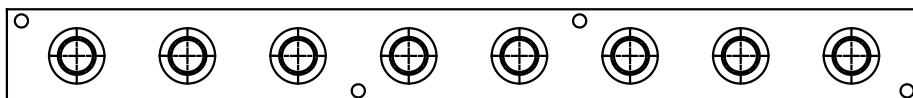
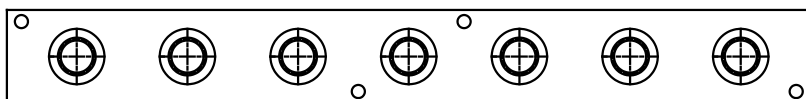
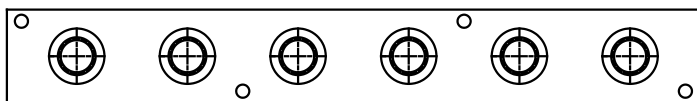
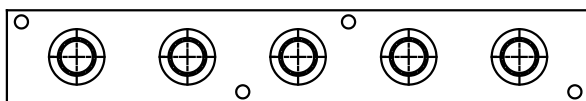
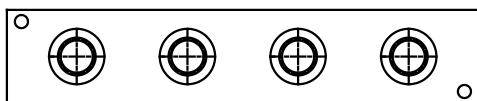
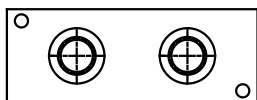
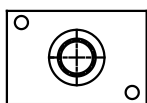
No. of Stations	1	2	3	4	5	6	7	8	9	10
Dim. "L"	2.25	3.75	5.25	5.75	7.25	8.75	10.25	11.75	13.25	14.75
X1	1.88	3.38	4.88	4.38	5.88	7.38	8.88	10.38	11.88	13.38

FOR 4+ STATIONS

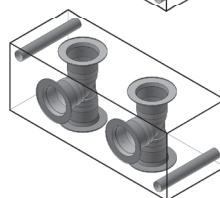
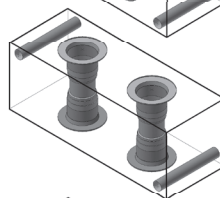
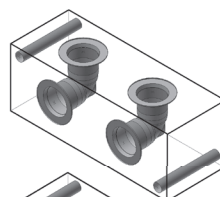
TYPE		MATERIAL	MATERIAL SIZE	END PORT CODE	PORT ORIENTATION	NO. of STATIONS	SIDE PORT CODE	
<div>JC</div> <div>COMPACT</div> <div>JUNCTION</div>	Standard Options			<div>CODE</div> <div>TYPE</div> <div>XX</div> <div>NONE</div>	<div>CODE</div> <div>STYLE</div> <div>090</div> <div>  <div>90° Top & One Side</div> </div>	<div>01 to 10</div>	<div>CODE</div> <div>TYPE</div> <div>NA</div> <div>1/8" NPTF</div>	
	<div>B</div> <div>Brass</div>	<div>CODE</div> <div>SIZE</div> <div>125</div> <div>1.25" x 1.25"</div>			<div>SB</div> <div>SAE 4</div>			
	<div>F</div> <div>Steel</div>				<div>NB</div> <div>1/4" NPTF</div>			
	<div>A</div> <div>Aluminum</div>							
	Non-Standard Options							
	<div>3</div> <div>303 Stainless Steel</div>							
	<div>4</div> <div>304 Stainless Steel</div>	<div>150</div> <div>1.50" x 1.50"</div>						
	<div>6</div> <div>316 Stainless Steel</div>							
	Available on Special Order Only						<div>270</div> <div>  <div>270° Top & Two Opposite Sides</div> </div> <div>Available on Special Order Only</div>	<div>SC</div> <div>SAE 6</div>
					<div>NC</div> <div>3/8" NPTF</div>			

Page
119

Typical Mounting Styles and Cross Sections

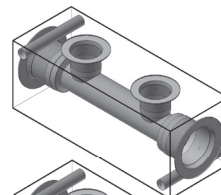


JUNCTIONS

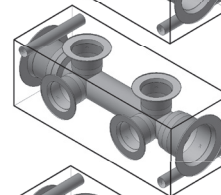


HEADERS

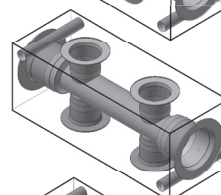
0°



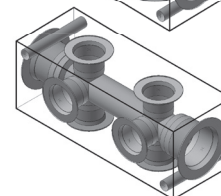
90°



180°



270°

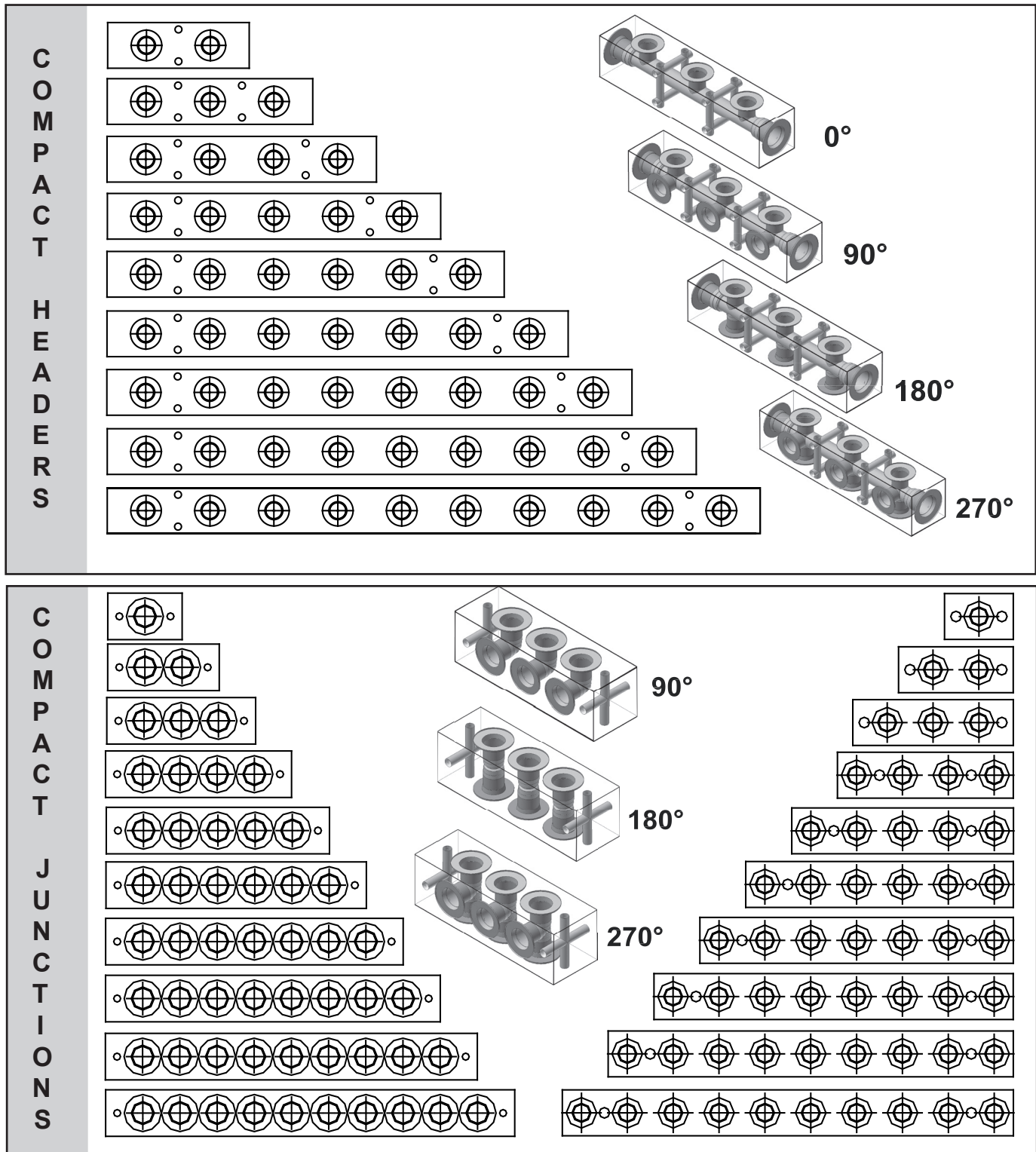


WE RESERVE THE RIGHT TO DISCONTINUE MODELS, OR CHANGE SPECIFICATIONS WITHOUT NOTICE OR INCURRING OBLIGATION

Lynch Products Can Be Modified to Suit Your Application

Phone: 1 (888) 626-4365 or + 1 (905) 363-2400 Fax: 1 (800) 263-5807 www.lynch.ca sales@lynch.ca

Compact Mounting Styles and Cross Sections



WE RESERVE THE RIGHT TO DISCONTINUE MODELS, OR CHANGE SPECIFICATIONS WITHOUT NOTICE OR INCURRING OBLIGATION

Lynch Products Can Be Modified to Suit Your Application

Phone: 1 (888) 626-4365 or +1 (905) 363-2400 Fax: 1 (800) 263-5807 www.lynch.ca sales@lynch.ca

Non Standard Options & Ordering Information

Combinations may be subject to a minimum quantity or set-up charge.

How To Special Order Non-Standard Port Spacing (Dimension E)

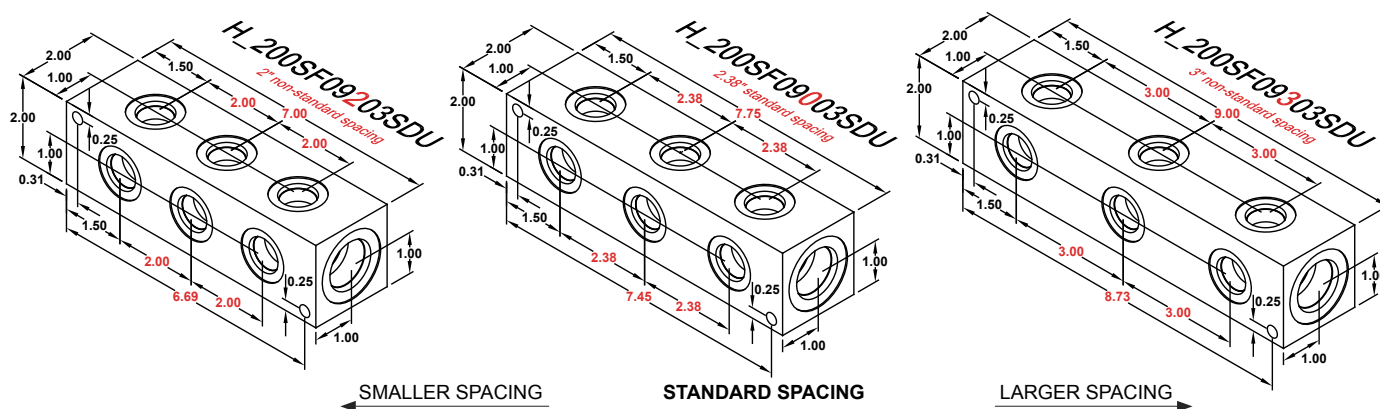
1- Only whole inch values can be ordered, minimum spacing is limited by the port sizes.

2- Modify the third character in port orientation code with a value from 1-9.

ie: 000 becomes 002 for 0 degree with 2" special spacing.

ie: 180 becomes 184 for 180 degree with 4" special spacing.

See complete examples below.



Note: All effected dimensions are shown above, in red.

BSPP Port Code Cross Reference

Replace the NPTF Code in the corresponding locations for either end port or side port.

Note: All BSPP configurations may not be possible, please consult the factory to confirm your part number.

CODE	TYPE
BA	1/8" BSPP
BB	1/4" BSPP
BC	3/8" BSPP
BD	1/2" BSPP
BF	3/4" BSPP
BH	1" BSPP
BI	1 1/4" BSPP
BJ	1 1/2" BSPP
BK	2" BSPP

Non Standard Part Number Examples

Ex: HA175NC09005NBU - Standard NPTF Header
HA175BC09005BBU - BSPP Header Version
with 3/8" BSPP End Ports and 1/4" BSPP Side Ports

Ex: JF150XX18010NAU - Standard NPTF Junction
JF150XX18010BAU - BSPP Junction Version
with 1/8" BSPP Side Ports

Ex: HD300NI00008NAU - Non-Standard NPTF Header
HD300BI00008BHU - BSPP Header Version
with 1 1/4" BSPP End Ports and 1" BSPP Side Ports

WE RESERVE THE RIGHT TO DISCONTINUE MODELS, OR CHANGE SPECIFICATIONS WITHOUT NOTICE OR INCURRING OBLIGATION

Lynch Products Can Be Modified to Suit Your Application

Phone: 1 (888) 626-4365 or +1 (905) 363-2400 Fax: 1 (800) 263-5807 www.lynch.ca sales@lynch.ca