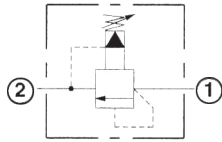
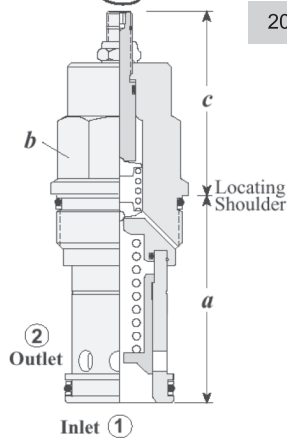


Sun Hydraulics Relief Valves

PILOT OPERATED RELIEF VALVES



Full Adjustment 5 Turns



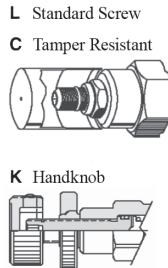
CAPACITY	MODEL CODE	CAVITY	CARTRIDGE DIMENSIONS					INSTALLATION TORQUE (lb/ft)
			a	b	L	C	K	
12 GPM	RPCC - LAN	T - 162A	1.22	3/4"	2.11	2.17	2.31	25/30
25 GPM	RPEC - LAN	T - 10A	1.56	7/8"	2.00	2.06	2.25	30/35
50 GPM	RPGC - LAN	T - 3A	1.88	1 1/8"	2.12	2.18	2.38	45/50
100 GPM	RPIC - LAN	T - 16A	2.44	1 1/4"	2.44	2.47	2.69	150/160
200 GPM	RPKC - LAN	T - 18A	3.13	1 5/8"	2.81	2.94	3.06	350/375

RP * C - * * *

Nominal Capacity

- C 12 GPM*
- E 25 GPM
- G 50 GPM
- I 100 GPM
- K 200 GPM

Control**



Adjustment Range

- A 100 - 3000 psi
- B 50 - 1500 psi
- C 150 - 6000 psi
- N 60 - 800 psi
- Q 60 - 400 psi
- W 150 - 4500 psi

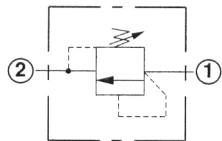
Seal

- N Buna - N
- V Viton

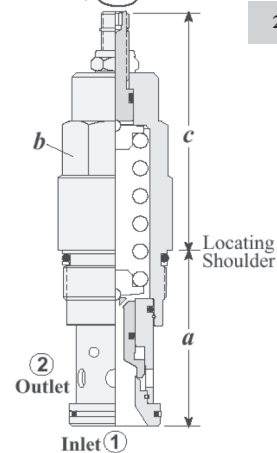
Adjustment Range Options:

A, B, C, and W are standard set at 1000 psi
N Option is standard set at 400 psi
Q Option is standard set at 200 psi
* Minimum setting 75 psi on all ranges
Customer may specify pressure setting.

DIRECT ACTING RELIEF VALVES



Full Adjustment 5 Turns



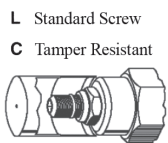
CAPACITY	MODEL CODE	CAVITY	CARTRIDGE DIMENSIONS				INSTALLATION TORQUE (lb/ft)
			a	b	L	C	
12 GPM	RDBA - LAN	T - 162A	1.22	3/4"	2.11	2.17	25/30
25 GPM	RDDA - LAN	T - 10A	1.56	7/8"	2.38	2.44	30/35
50 GPM	RDEA - LAN	T - 3A	1.88	1 1/8"	2.50	2.56	45/50
100 GPM	RDHA - LAN	T - 16A	2.44	1 1/4"	3.25	3.31	150/160
200GPM	RDJA - LAN	T - 18A	3.13	1 5/8"	3.94	4.07	350/375

RD * A - * * *

Nominal Capacity

- B 12 GPM
- D 25 GPM
- F 50 GPM
- H 100 GPM
- J 200 GPM

Control**



Adjustment Range

- A 500 - 3000 psi
- B 300 - 1500 psi
- C 1000 - 6000 psi
- D 200 - 800 psi
- E 100 - 400 psi
- S 50 - 200 psi
- W 1000 - 4500 psi

Seal

- N Buna - N
- V Viton

Adjustment Range Options:

A, B, C, and W are standard set at 1000 psi
D Option is standard set at 400 psi
E Option is standard set at 200 psi
S Option is standard set at 100 psi
Customer may specify pressure setting.

U.S. Patent #4,742,846
European Patent Pending

Note: Sun's stainless steel passivated product line is growing.

If you are interested in a stainless option for a model which is not shown please contact Lynch Fluid Controls Inc.

WE RESERVE THE RIGHT TO DISCONTINUE MODELS, OR CHANGE SPECIFICATIONS WITHOUT NOTICE OR INCURRING OBLIGATION

Lynch Products Can Be Modified to Suit Your Application

Phone: 1 (888) 626-4365 or +1 (905) 363-2400 Fax: 1 (800) 263-5807 www.lynch.ca sales@lynch.ca