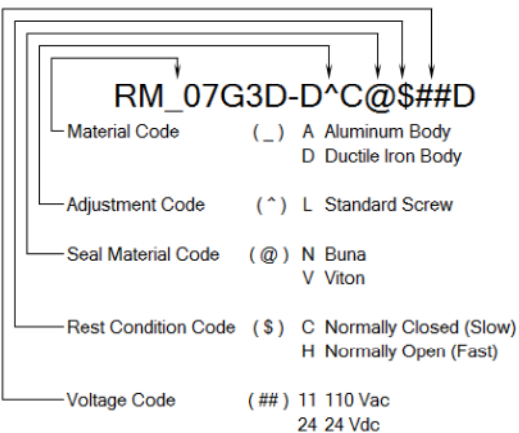
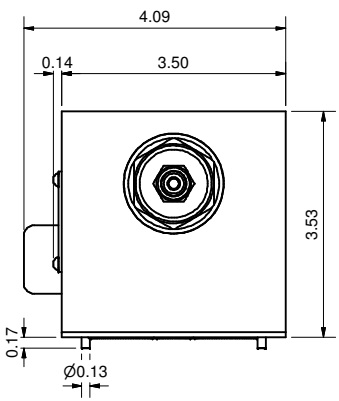
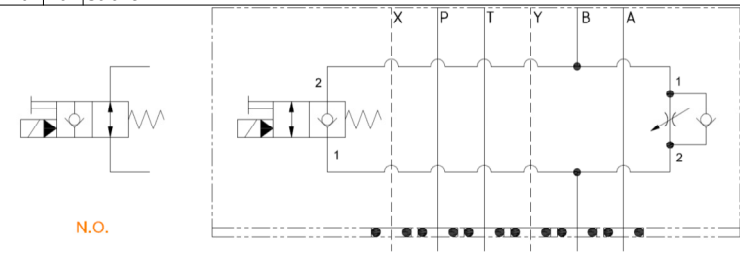
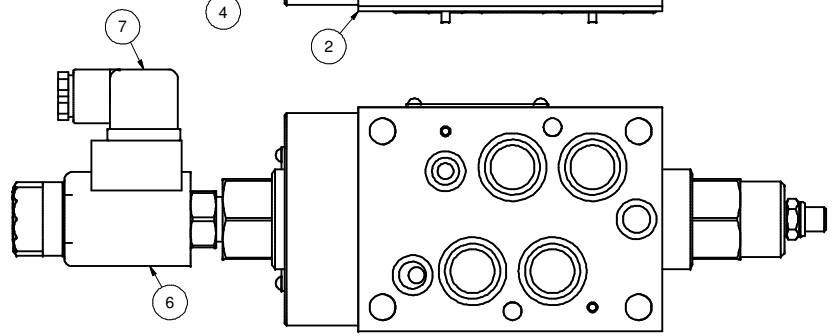
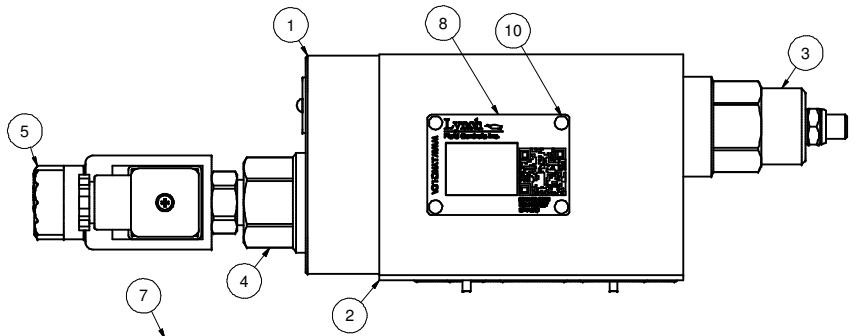
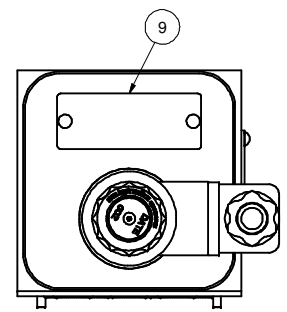
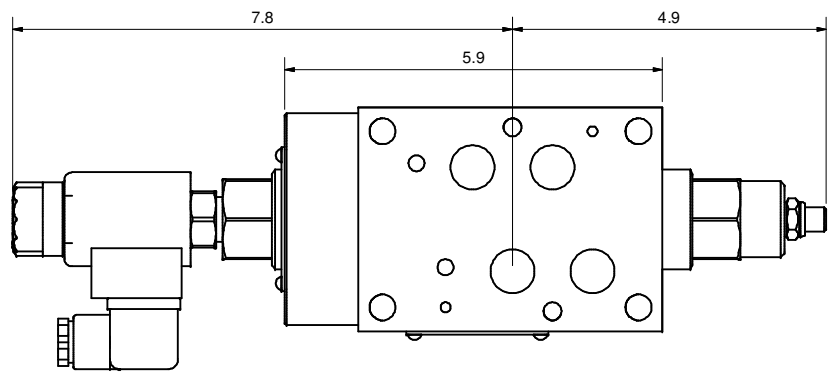


### MODEL CODE BREAKDOWN



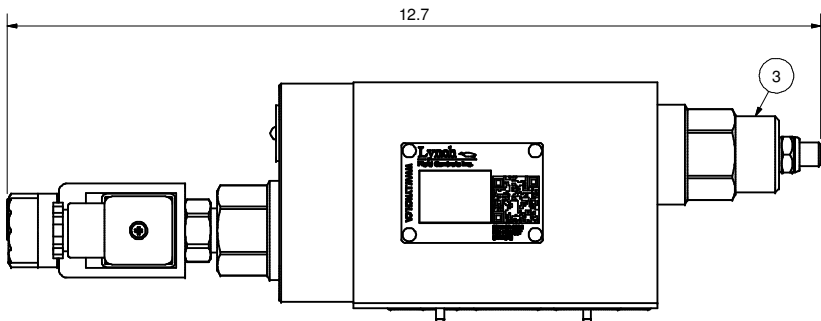
DWG NO	RM_07G3D-D^C@\$\$D	REV	-
MODEL CODE	RM_07G3D-D^C@\$\$D		
PROPRIETARY NOTICE	TITLE		
THIS DRAWING DESCRIBES A PROPRIETARY PRODUCT OF LYNCH FLUID CONTROLS INC. WHICH MAY NOT BE REPRODUCED IN WHOLE OR IN PART NOR GIVEN TO A THIRD PARTY WITHOUT WRITTEN PERMISSION FROM LYNCH FLUID CONTROLS INC.	2 Speed D07 Sandwich Module M/I B Pilot Operated Poppet Needle w/ FF Check		
DATA UNIT: INCH	3RD ANGLE PROJECTION		

ITEM QTY		DESCRIPTION
1	1	Manifold Body
2	1	Seal Plate
3	1	[Flow Control] Fully adjustable needle valve with reverse flow check
4	1	[Main Stage] 2-way, poppet directional valve with integral T-8A control cavity - control 2-1
5	1	[Solenoid] 2-way, solenoid-operated directional spool valve - pilot capacity
6	1	Coil
7	1	Connector
8	1	Nameplate
9	1	Nameplate
10	6	Screws



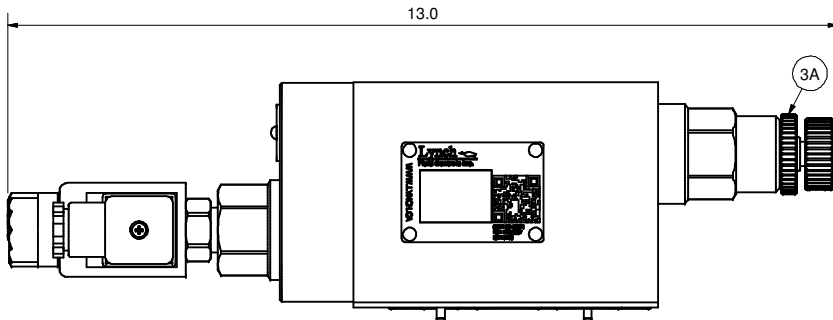
DWG NO RM\_07G3D-D^C@\$\$D

### L - Standard Screw



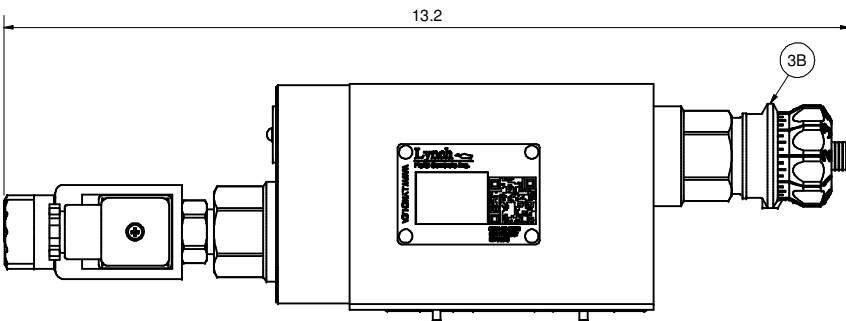
### K - Hand-Knob

Non-Standard Option: Order Standard L control w/ 991 211 Kit



### H - Calibrated Hand-Knob

Non-Standard Option



DWG NO	RM_07G3D-D^C@\$\$#D	REV	-
MODEL CODE	RM_07G3D-D^C@\$\$#D		

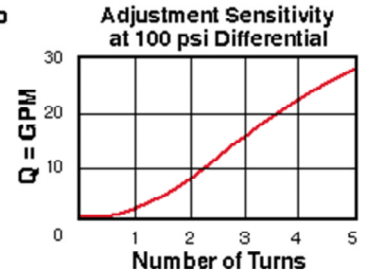
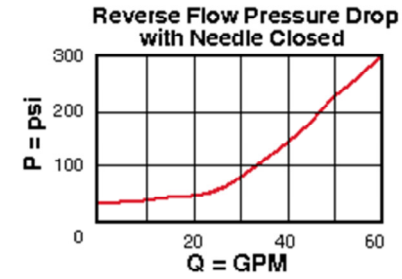
**PROPRIETARY NOTICE**  
 THIS DRAWING DESCRIBES A PROPRIETARY PRODUCT OF LYNCH FLUID CONTROLS INC. WHICH MAY NOT BE REPRODUCED IN WHOLE OR IN PART NOR GIVEN TO A THIRD PARTY WITHOUT WRITTEN PERMISSION FROM LYNCH FLUID CONTROLS INC.

TITLE  
**Technical Data & Non-Standard Options**

DATA UNIT: INCH  
 3RD ANGLE PROJECTION

ITEM QTY		DESCRIPTION
3	1	[Flow Control] Fully adjustable needle valve with reverse flow check
3A	1	[Flow Control] Fully adjustable needle valve with reverse flow check [Hand-Knob]
3B	1	[Flow Control] Fully adjustable needle valve with reverse flow check [Calibrated Hand-Knob]

### Flow Control



### Main Stage

