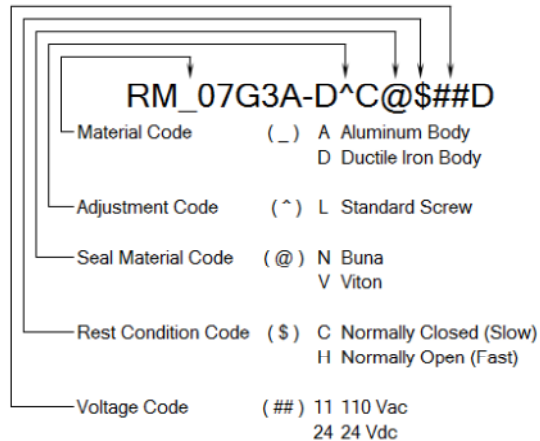


MODEL CODE BREAKDOWN



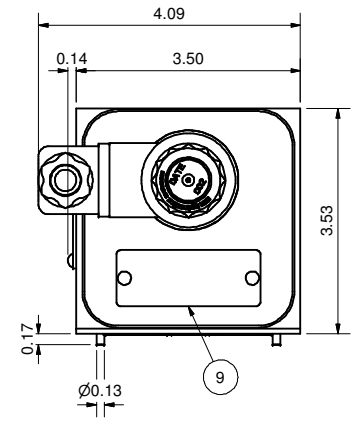
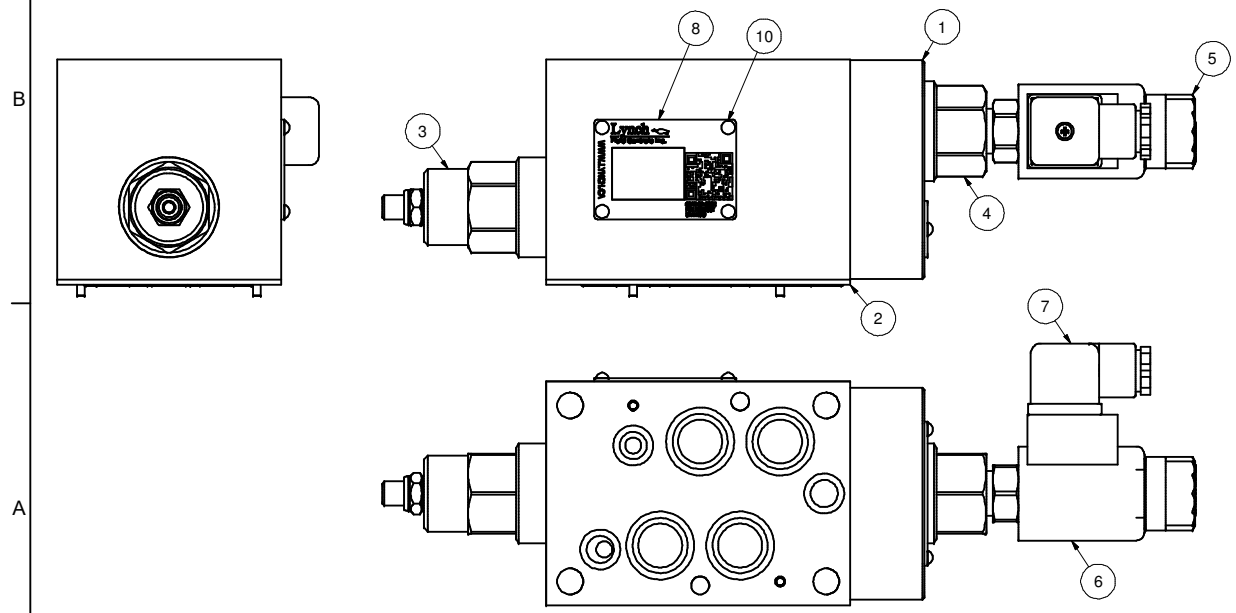
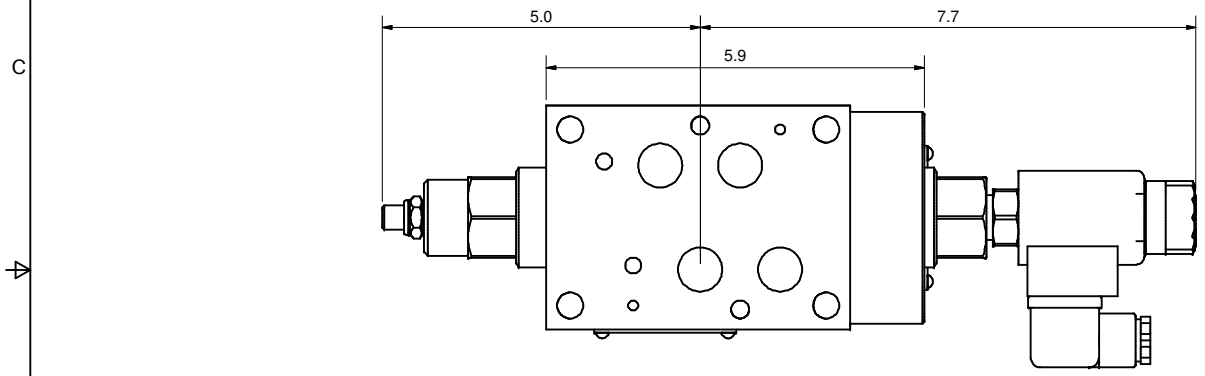
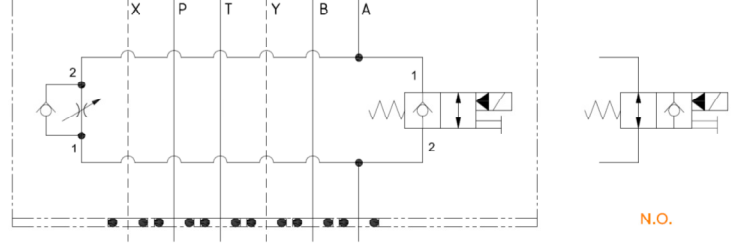
Lynch
Fluid Controls Inc.

PROPRIETARY NOTICE
THIS DRAWING DESCRIBES A PROPRIETARY PRODUCT OF LYNCH FLUID CONTROLS INC. WHICH MAY NOT BE REPRODUCED IN WHOLE OR IN PART NOR GIVEN TO A THIRD PARTY WITHOUT WRITTEN PERMISSION FROM LYNCH FLUID CONTROLS INC.

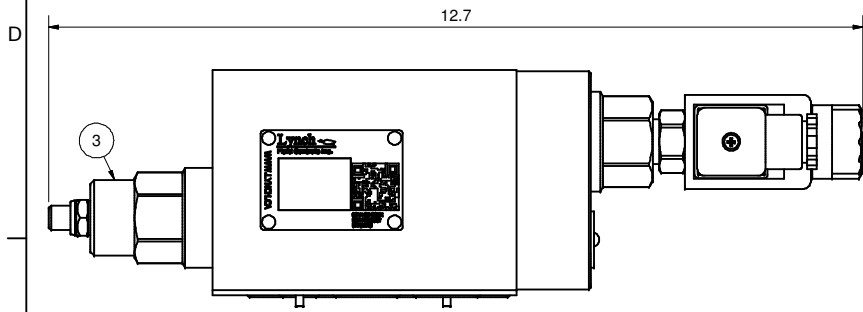
DATA UNIT: INCH 3RD ANGLE PROJECTION

| | | | |
|------------|---|-----|---|
| DWG NO | RM_07G3A-D^C@\$\$#D | REV | - |
| MODEL CODE | RM_07G3A-D^C@\$\$#D | | |
| TITLE | 2 Speed D07 Sandwich Module M/O A Pilot Operated Poppet Needle w/ FF Check | | |

| ITEM QTY | | DESCRIPTION |
|----------|---|--|
| 1 | 1 | Manifold Body |
| 2 | 1 | Seal Plate |
| 3 | 1 | [Flow Control] Fully adjustable needle valve with reverse flow check |
| 4 | 1 | [Main Stage] 2-way, poppet directional valve with integral T-8A control cavity - control 2-1 |
| 5 | 1 | [Solenoid] 2-way, solenoid-operated directional spool valve - pilot capacity |
| 6 | 1 | Coil |
| 7 | 1 | Connector |
| 8 | 1 | Nameplate |
| 9 | 1 | Nameplate |
| 10 | 6 | Screws |

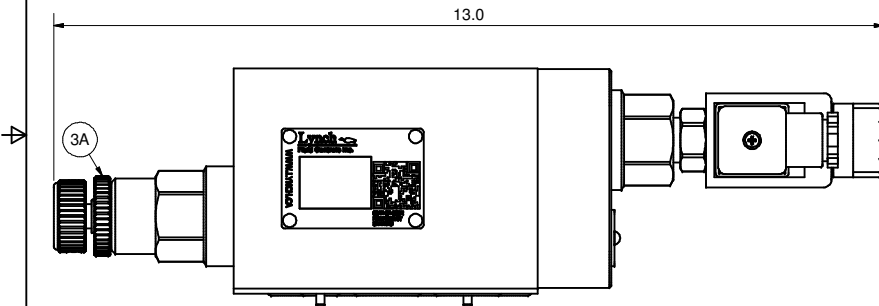


L - Standard Screw



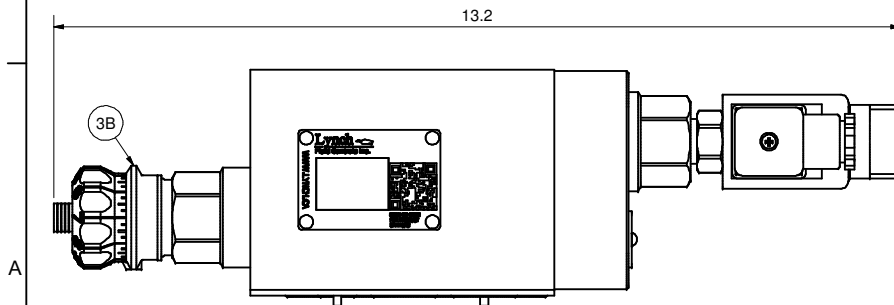
K - Hand-Knob

Non-Standard Option: Order Standard L control w/ 991 211 Kit



H - Calibrated Hand-Knob

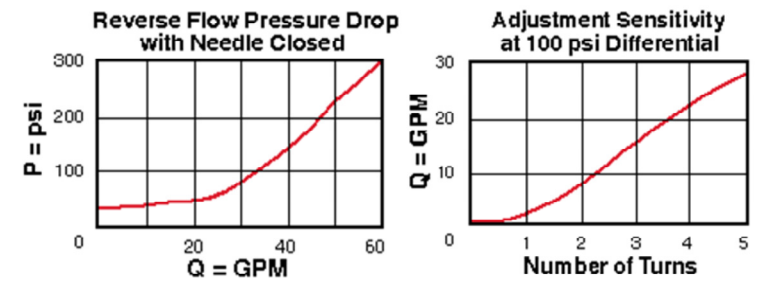
Non-Standard Option



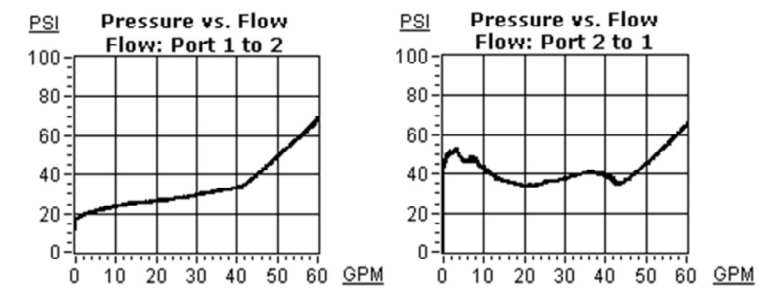
| | | | |
|---|----------------------|---|---|
| DWG NO | RM_07G3A-D^C@\$\$#D | REV | - |
| MODEL CODE | RM_07G3A-D^C@\$\$#D | | |
| PROPRIETARY NOTICE THIS DRAWING DESCRIBES A PROPRIETARY PRODUCT OF LYNCH FLUID CONTROLS INC. WHICH MAY NOT BE REPRODUCED IN WHOLE OR IN PART NOR GIVEN TO A THIRD PARTY WITHOUT WRITTEN PERMISSION FROM LYNCH FLUID CONTROLS INC. | | TITLE Technical Data & Non-Standard Options | |
| DATA UNIT: INCH | 3RD ANGLE PROJECTION | | |

| ITEM QTY | | DESCRIPTION |
|----------|---|---|
| 3 | 1 | [Flow Control] Fully adjustable needle valve with reverse flow check |
| 3A | 1 | [Flow Control] Fully adjustable needle valve with reverse flow check [Hand-Knob] |
| 3B | 1 | [Flow Control] Fully adjustable needle valve with reverse flow check [Calibrated Hand-Knob] |

Flow Control



Main Stage



DWG NO RM_07G3A-D^C@\$\$#D