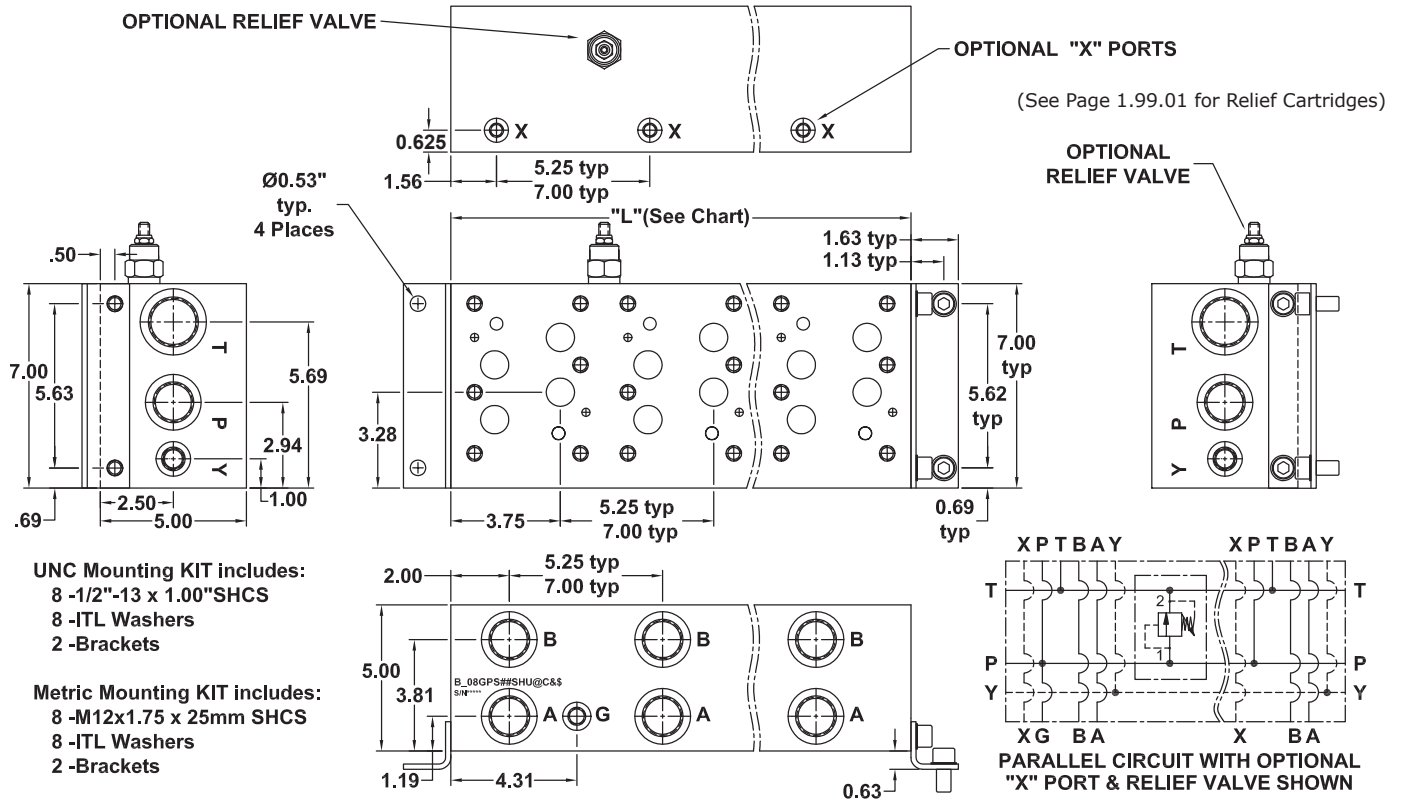


D08 Standard Flow Parallel Circuit Manifold



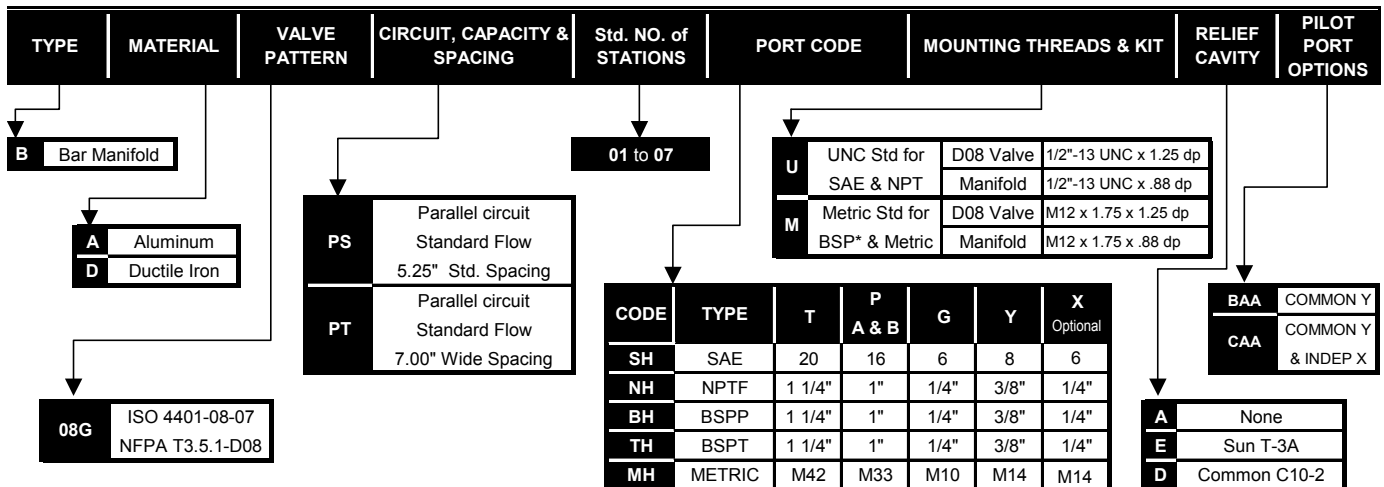
No. of Stations	1	2	3	4	5	6	7
Dim. "L", 5.25" spacing	5.25	10.50	15.75	21.00	26.25	31.50	36.75
est. weight in lb.- alum	17	35	52	70	87	105	122
est. weight in lb.- iron	47	94	141	189	236	283	330
Dim. "L", 7.00" spacing	-	12.25	19.25	26.25	33.25	-	-
est. weight in lb.- alum	-	41	64	87	111	-	-
est. weight in lb.- iron	-	110	173	236	299	-	-

Notes:

- 1) Isolations on P & T available - See Page 5 for Codes
- 2) Common X port option available - contact factory for P/N
- 3) Larger relief cavities available - contact factory for P/N

PART NUMBER SYSTEM

Aluminum D08 with 5.25" spacing, Common Y & SAE porting example: **BA08GPS**SHUABAA**



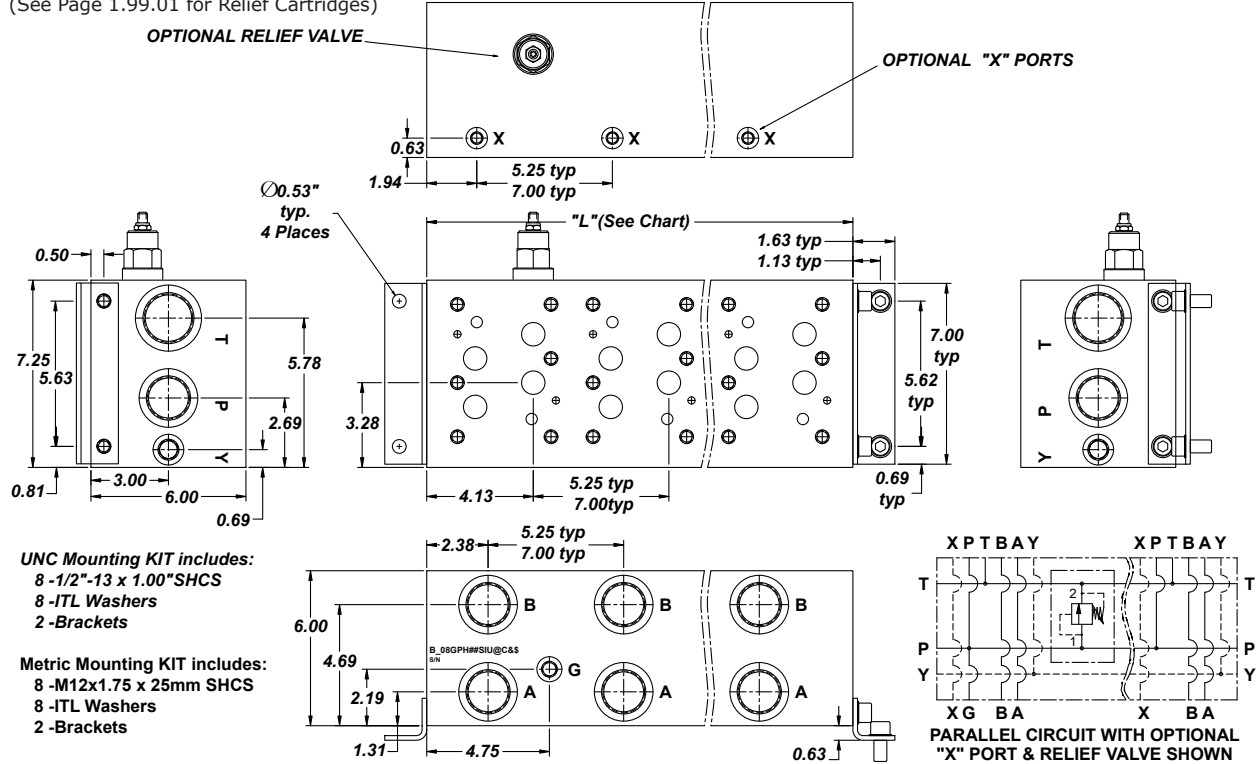
WE RESERVE THE RIGHT TO DISCONTINUE MODELS, OR CHANGE SPECIFICATIONS WITHOUT NOTICE OR INCURRING OBLIGATION

Lynch Products Can Be Modified to Suit Your Application

Phone: 1 (888) 626-4365 or +1 (905) 363-2400 Fax: 1 (800) 263-5807 www.lynch.ca sales@lynch.ca

D08 High Flow Parallel Circuit Manifold

(See Page 1.99.01 for Relief Cartridges)



No. of Stations	1	2	3	4	5	6	7
Dim. "L", 5.25" spacing	6.00	11.25	16.50	21.75	27.00	32.25	37.50
est. weight in lb.- alum	28	52	77	101	126	150	175
est. weight in lb.- iron	75	141	207	273	339	405	471
Dim. "L", 7.00" spacing	-	13.00	20.00	27.00	34.00	-	-
est. weight in lb.- alum	-	61	93	126	158	-	-
est. weight in lb.- iron	-	163	251	339	427	-	-

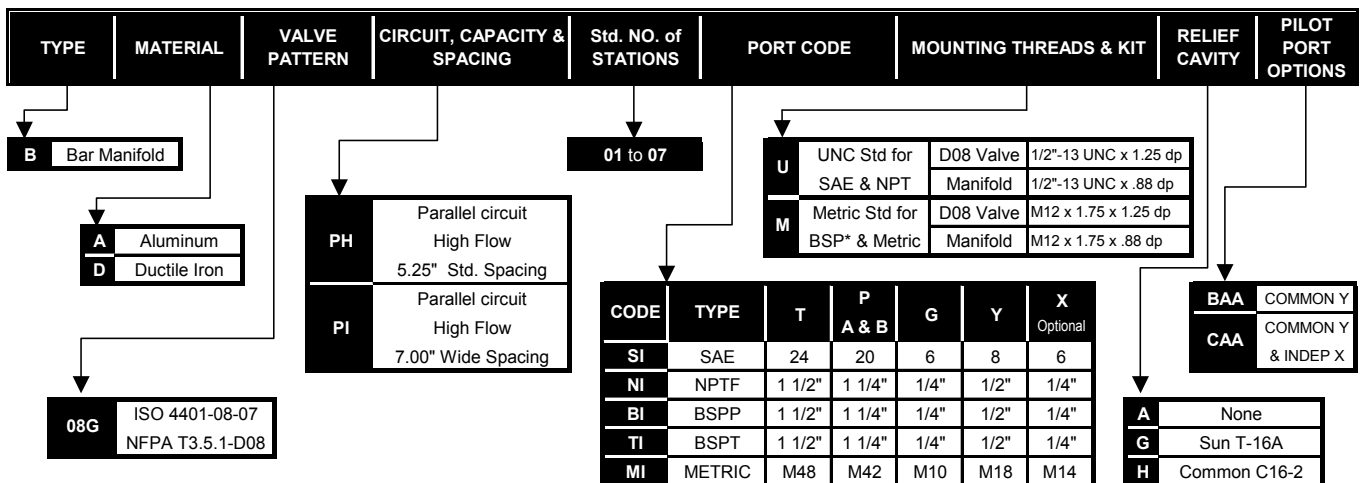
SHADED AREA AVAILABLE
ON SPECIAL ORDER ONLY

Notes:

- 1) Isolations on P & T available - See Page 5 for Codes
- 2) Common X port option available - contact factory for P/N
- 3) Larger relief cavities available - contact factory for P/N

PART NUMBER SYSTEM

Aluminum D08 with 5.25" spacing, Common Y & SAE porting example: **BA08GPH**SIUABAA**



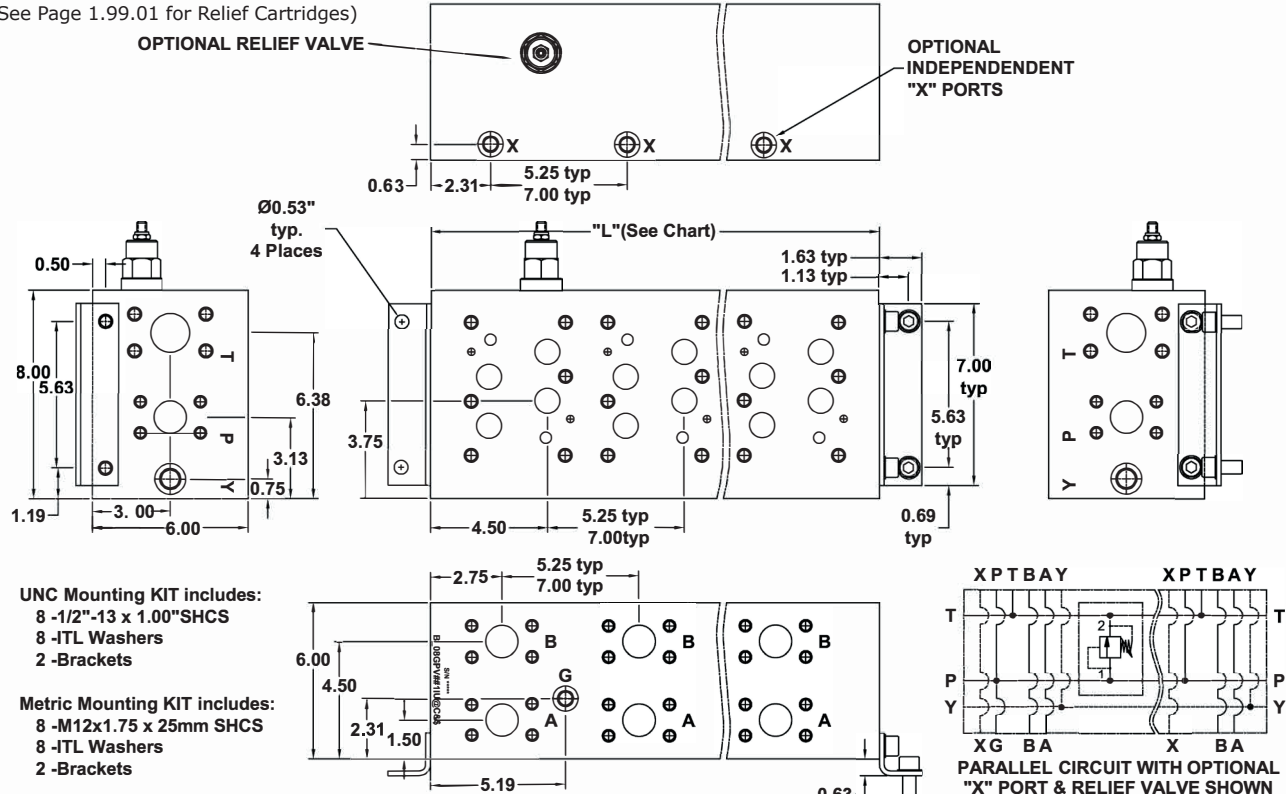
WE RESERVE THE RIGHT TO DISCONTINUE MODELS, OR CHANGE SPECIFICATIONS WITHOUT NOTICE OR INCURRING OBLIGATION

Lynch Products Can Be Modified to Suit Your Application

Phone: 1 (888) 626-4365 or +1 (905) 363-2400 Fax: 1 (800) 263-5807 www.lynch.ca sales@lynch.ca

D08 Very High Flow Parallel Circuit with Flange Ports

(See Page 1.99.01 for Relief Cartridges)



No. of Stations	1	2	3	4	5	6	7
Dim. "L", 5.25" spacing	6.75	12.00	17.25	22.50	27.75	33.00	38.25
est. weight in lb.- alum	31	55	79	103	127	150	174
est. weight in lb.- iron	83	148	212	277	342	406	471
Dim. "L", 7.00" spacing	-	13.75	20.75	27.75	34.75	-	-
est. weight in lb.- alum	-	63	95	127	158	-	-
est. weight in lb.- iron	-	169	255	342	428	-	-

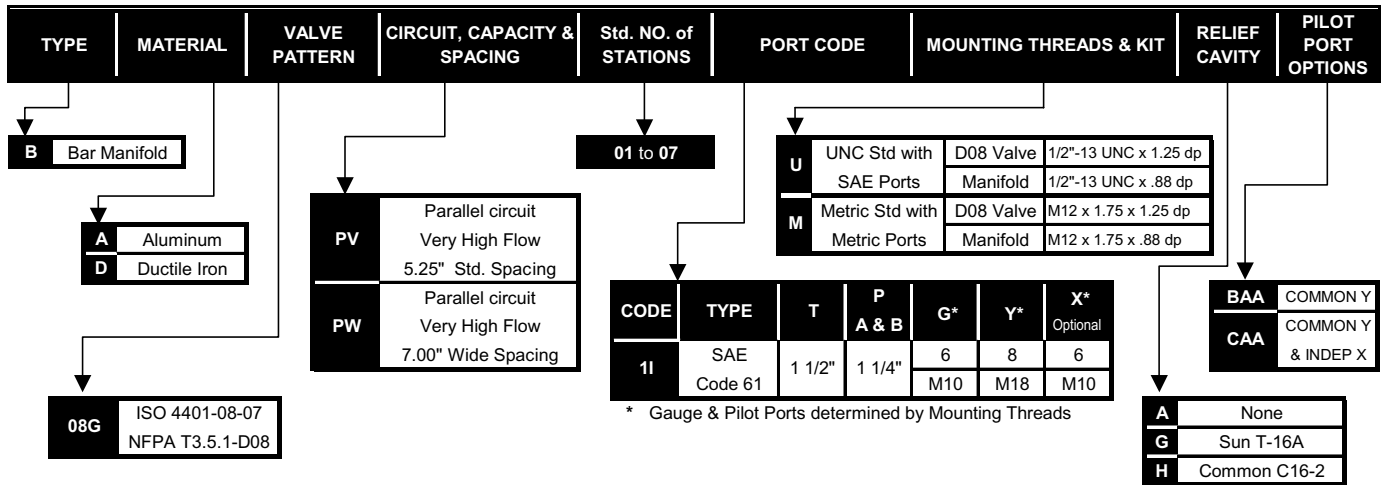
SHADED AREA AVAILABLE
ON SPECIAL ORDER ONLY

Notes:

- 1) Isolations on P & T available - See Page 5 for Codes
- 2) Common X port option available - contact factory for P/N
- 3) Larger relief cavities available - contact factory for P/N

PART NUMBER SYSTEM

Aluminum D08 with 5.25" spacing, Common Y & Flange porting example: **BA08GPV**1IUABAA**



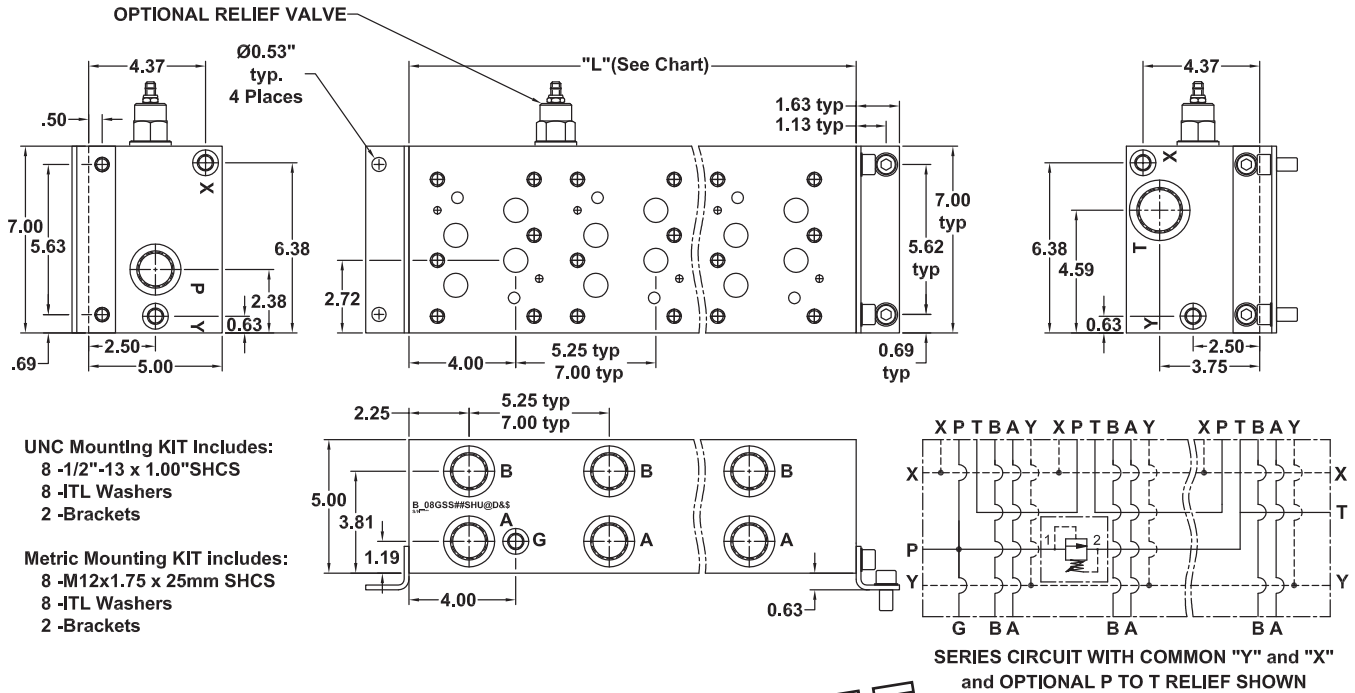
WE RESERVE THE RIGHT TO DISCONTINUE MODELS, OR CHANGE SPECIFICATIONS WITHOUT NOTICE OR INCURRING OBLIGATION

Lynch Products Can Be Modified to Suit Your Application

Phone: 1 (888) 626-4365 or +1 (905) 363-2400 Fax: 1 (800) 263-5807 www.lynch.ca sales@lynch.ca

D08 Standard Flow Series Circuit Manifold

(See Page 1.99.01 for Relief Cartridges)



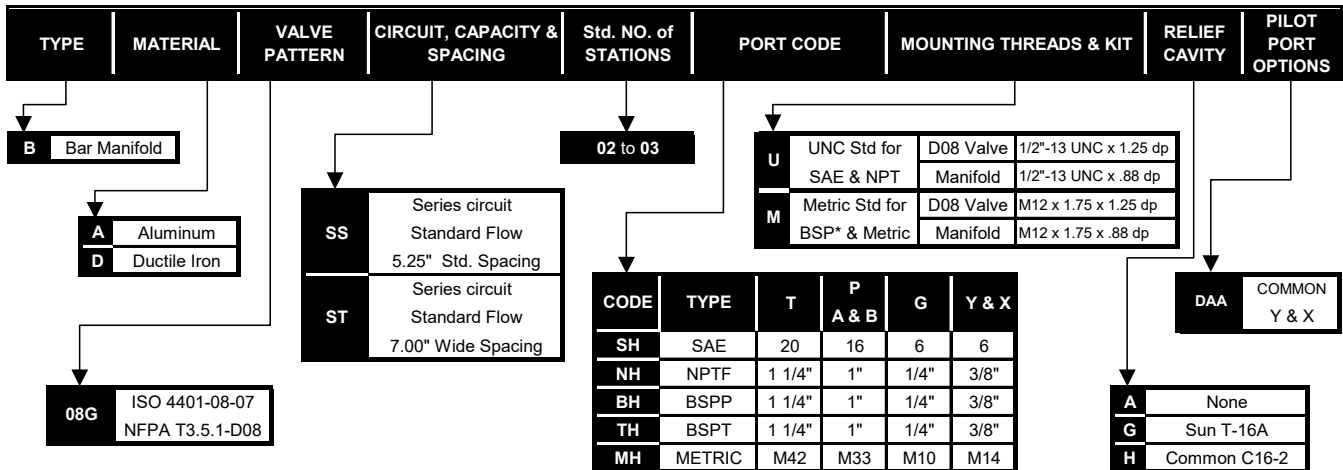
RELIEF
OPTION
AVAILABLE

No. of Stations	2	3	4
Dim. "L", 5.25" spacing	11.50	16.75	22.00
est. weight in lb.- alum	38	56	73
est. weight in lb.- iron	103	150	198
Dim. "L", 7.00" spacing	13.25	20.25	27.25
est. weight in lb.- alum	44	67	91
est. weight in lb.- iron	119	182	245

SHADED AREA AVAILABLE
ON SPECIAL ORDER ONLY

PART NUMBER SYSTEM

Aluminum D08 with 5.25" spacing, Common Y & X and SAE porting example: **BA08GSS**SHUADAA**



WE RESERVE THE RIGHT TO DISCONTINUE MODELS, OR CHANGE SPECIFICATIONS WITHOUT NOTICE OR INCURRING OBLIGATION

Lynch Products Can Be Modified to Suit Your Application

Phone: 1 (888) 626-4365 or +1 (905) 363-2400 Fax: 1 (800) 263-5807 www.lynch.ca sales@lynch.ca