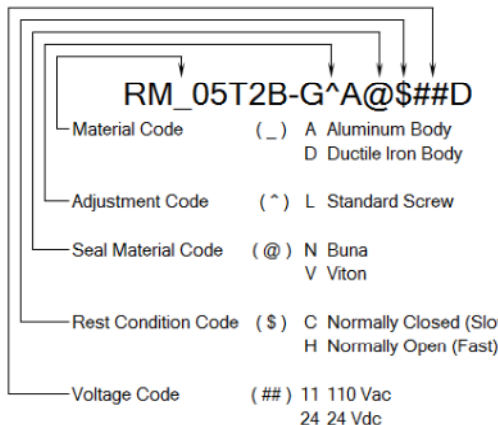
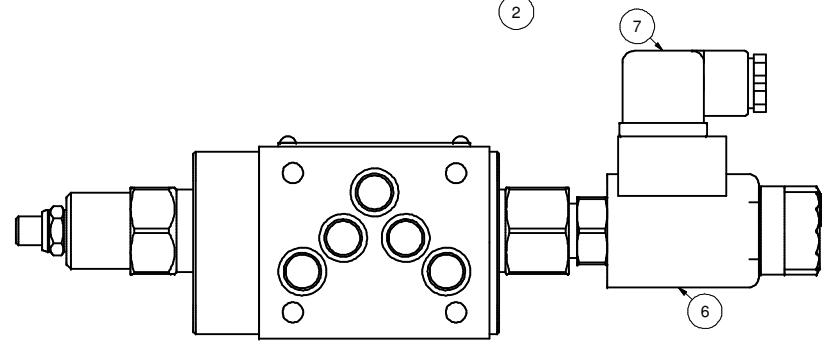
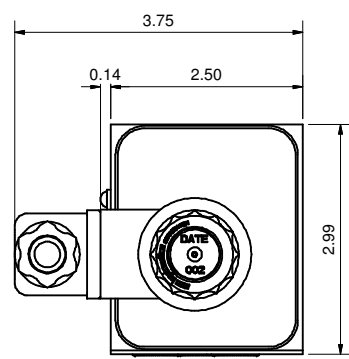
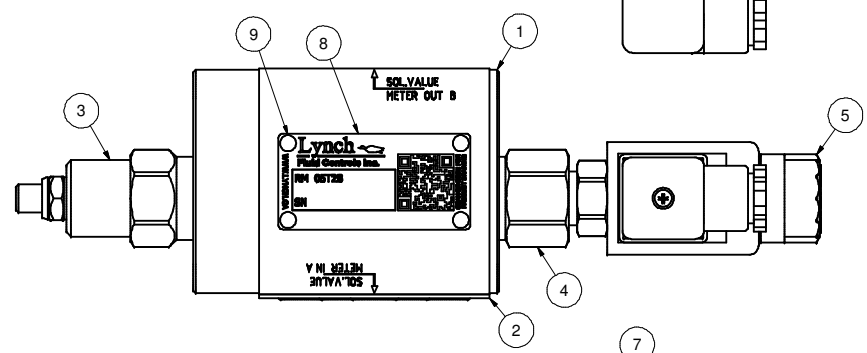
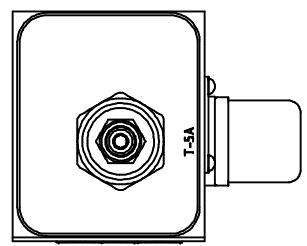
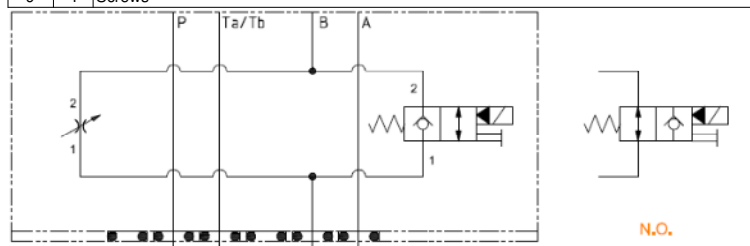
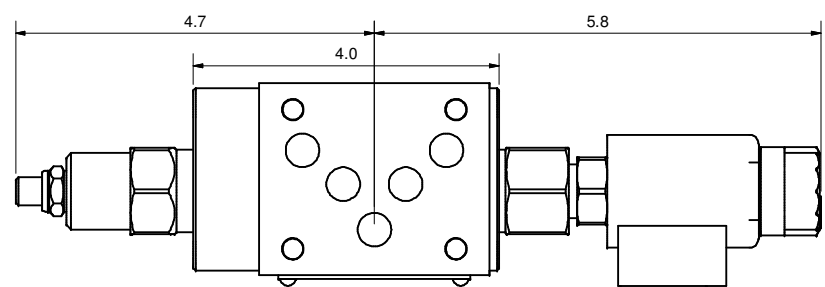


MODEL CODE BREAKDOWN



DWG NO	RM_05T2B-G^A@\$##D	REV	-
MODEL CODE	RM_05T2B-G^A@\$##D		
PROPRIETARY NOTICE	TITLE		
THIS DRAWING DESCRIBES A PROPRIETARY PRODUCT OF LYNCH FLUID CONTROLS INC. WHICH MAY NOT BE REPRODUCED IN WHOLE OR IN PART NOR GIVEN TO A THIRD PARTY WITHOUT WRITTEN PERMISSION FROM LYNCH FLUID CONTROLS INC.	2 Speed D05 Sandwich Module M/O B Pilot Operated Poppet Needle		
DATA UNIT: INCH	3RD ANGLE PROJECTION		

Bill of Material		
ITEM	QTY	DESCRIPTION
1	1	Manifold Body
2	1	Seal Plate
3	1	[Flow Control] Fully adjustable needle valve
4	1	[Main Stage] 2-way, poppet directional valve with integral T-8A control cavity - control 1-2
5	1	[Solenoid] 2-way, solenoid-operated directional spool valve - pilot capacity
6	1	Coil
7	1	Connector
8	1	Nameplate
9	4	Screws



DWG NO. RM_05T2B-G^A@\$\$#D



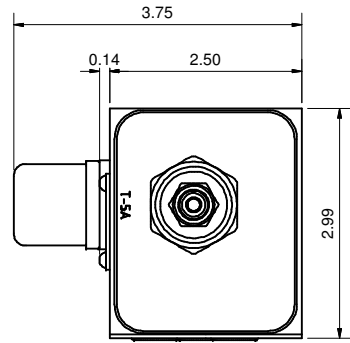
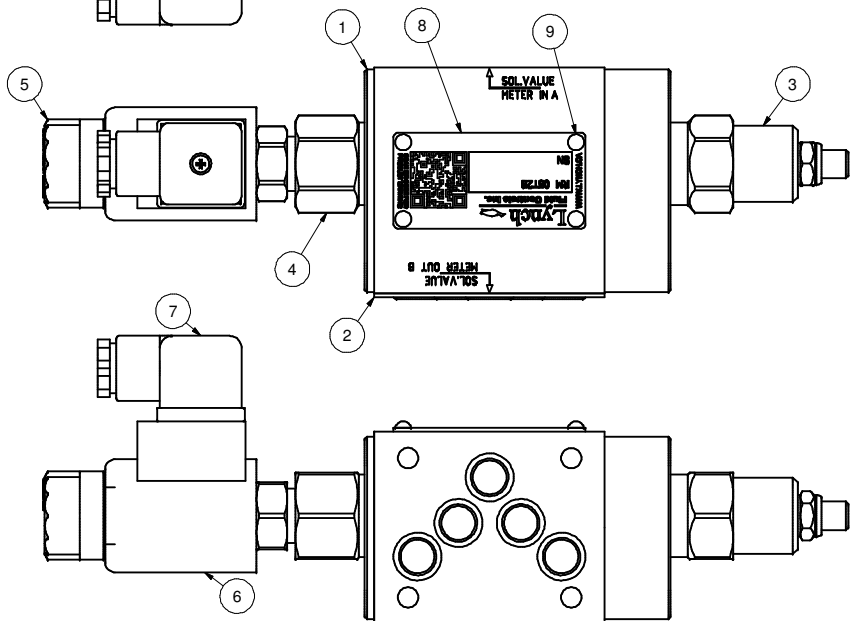
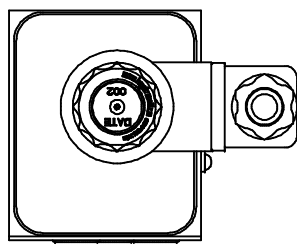
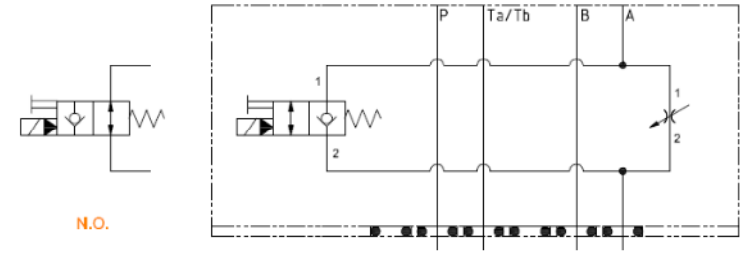
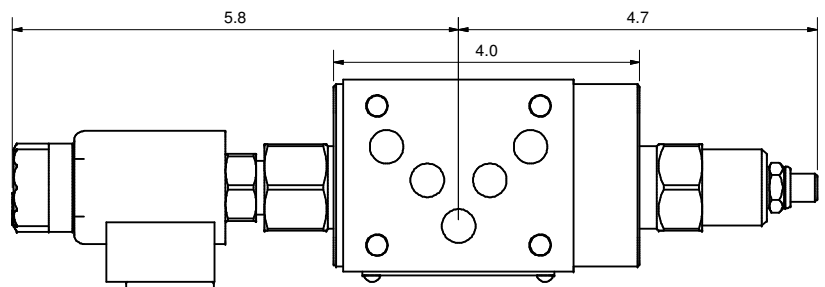
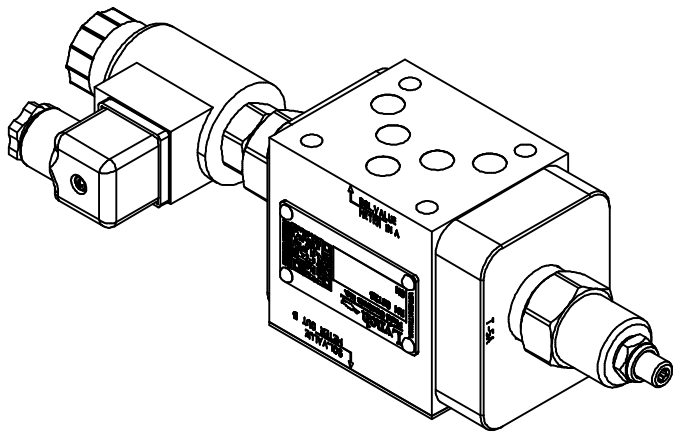
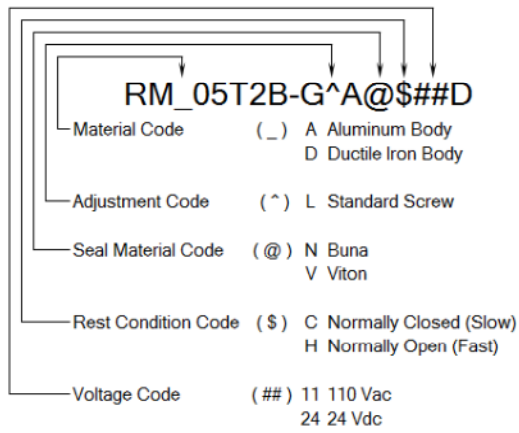
DWG NO	RM_05T2B-G^A@\$\$#D	REV	-
MODEL CODE	RM_05T2B-G^A@\$\$#D		
TITLE	2 Speed D05 Sandwich Module M/I A Pilot Operated Poppet Needle		

PROPRIETARY NOTICE
THIS DRAWING DESCRIBES A PROPRIETARY PRODUCT OF LYNCH FLUID CONTROLS INC. WHICH MAY NOT BE REPRODUCED IN WHOLE OR IN PART NOR GIVEN TO A THIRD PARTY WITHOUT WRITTEN PERMISSION FROM LYNCH FLUID CONTROLS INC.

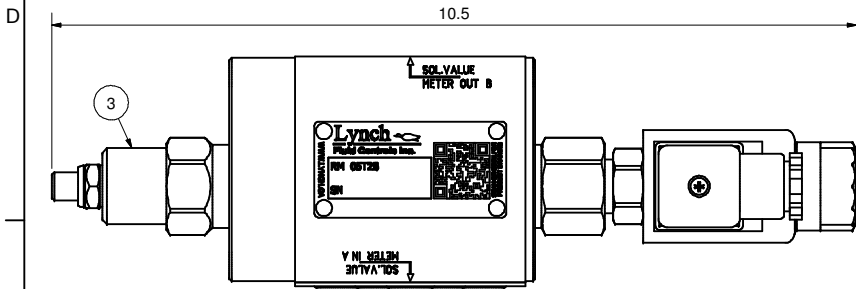
DATA UNIT:	INCH	3RD ANGLE PROJECTION
------------	------	----------------------

ITEM QTY		DESCRIPTION
1	1	Manifold Body
2	1	Seal Plate
3	1	[Flow Control] Fully adjustable needle valve
4	1	[Main Stage] 2-way, poppet directional valve with integral T-8A control cavity - control 1-2
5	1	[Solenoid] 2-way, solenoid-operated directional spool valve - pilot capacity
6	1	Coil
7	1	Connector
8	1	Nameplate
9	4	Screws

MODEL CODE BREAKDOWN

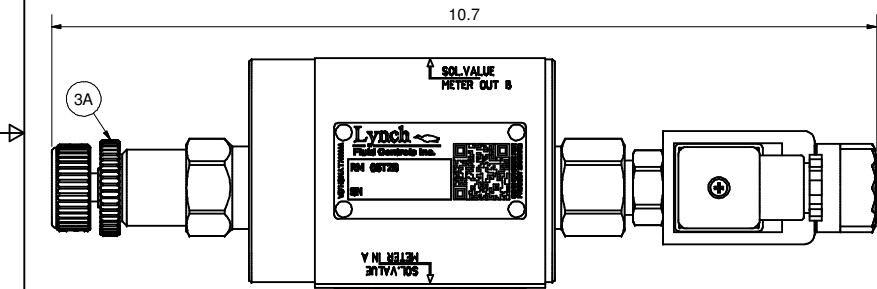


L - Standard Screw



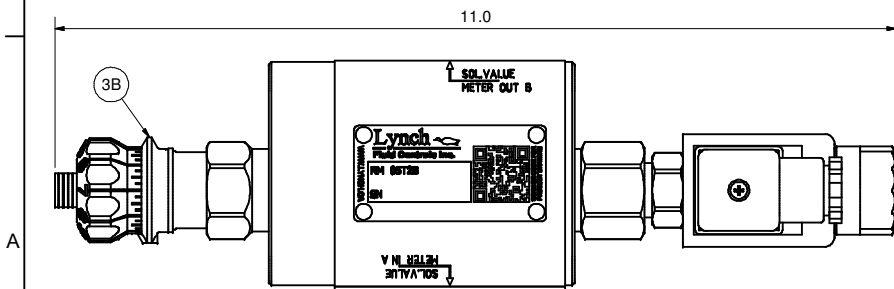
K - Hand-Knob

Non-Standard Option: Order Standard L control w/ 991 211 Kit



H - Calibrated Hand-Knob

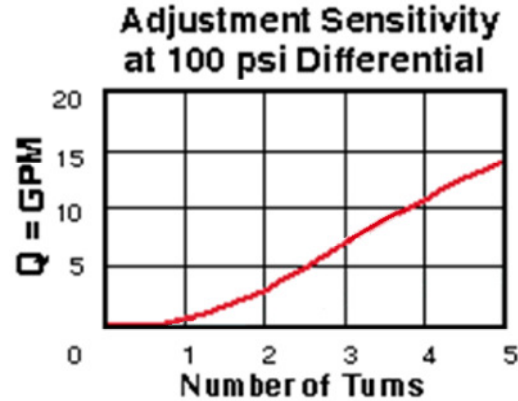
Non-Standard Option



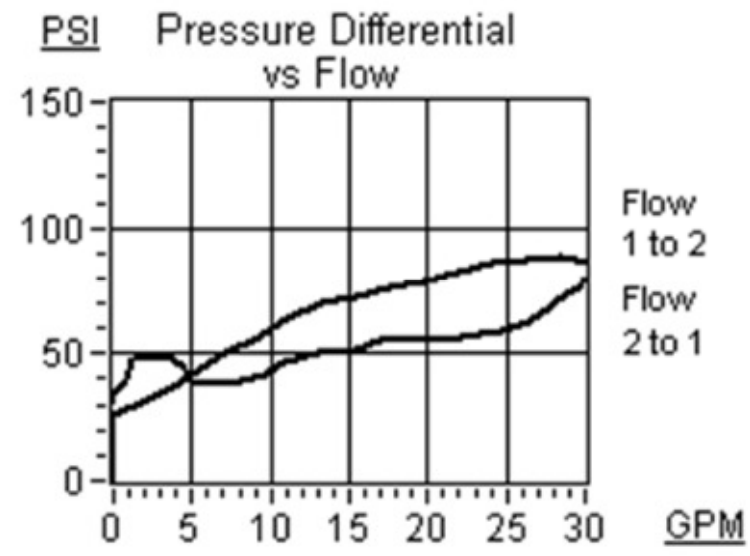
DWG NO	RM_05T2B-G^A@##D	REV	-
MODEL CODE	RM_05T2B-G^A@##D		
PROPRIETARY NOTICE THIS DRAWING DESCRIBES A PROPRIETARY PRODUCT OF LYNCH FLUID CONTROLS INC. WHICH MAY NOT BE REPRODUCED IN WHOLE OR IN PART NOR GIVEN TO A THIRD PARTY WITHOUT WRITTEN PERMISSION FROM LYNCH FLUID CONTROLS INC.		TITLE Technical Data & Non-Standard Options	
DATA UNIT: INCH	3RD ANGLE PROJECTION		

Bill of Material	
ITEM	DESCRIPTION
3	1 [Flow Control] Fully adjustable needle valve
3A	1 [Flow Control] Fully adjustable needle valve [Hand-Knob]
3B	1 [Flow Control] Fully adjustable needle valve [Calibrated Hand-Knob]

Flow Control



Main Stage



DWG NO RM_05T2B-G^A@##D

A

B

C

D