

**MODEL CODE BREAKDOWN**

**RM\_03G1A-N^A@\$##D**

- Material Code ( \_ ) A Aluminum Body  
D Ductile Iron Body
- Adjustment Code ( ^ ) L Standard Screw
- Seal Material Code ( @ ) N Buna  
V Viton
- Rest Condition Code ( \$ ) C Normally Closed (Slow)  
H Normally Open (Fast)
- Voltage Code ( ## ) 11 110 Vac  
24 24 Vdc

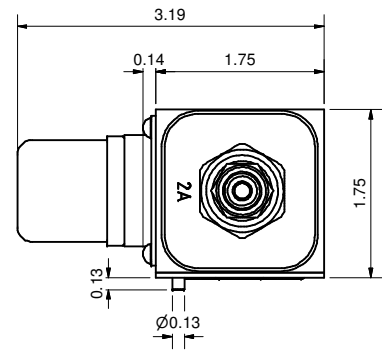
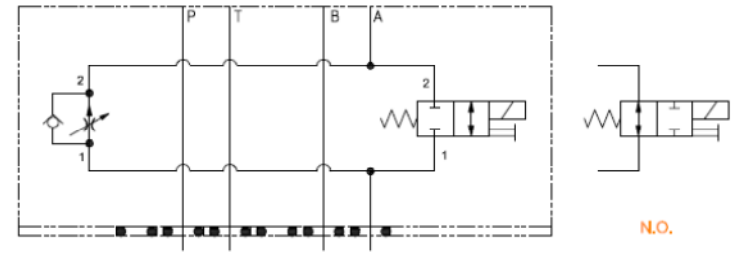
**Lynch**  
Fluid Controls Inc.

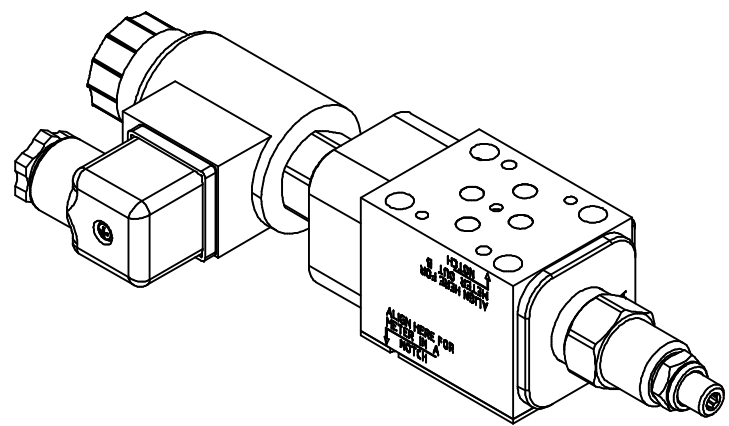
**PROPRIETARY NOTICE**  
THIS DRAWING DESCRIBES A PROPRIETARY PRODUCT OF LYNCH FLUID CONTROLS INC. WHICH MAY NOT BE REPRODUCED IN WHOLE OR IN PART NOR GIVEN TO A THIRD PARTY WITHOUT WRITTEN PERMISSION FROM LYNCH FLUID CONTROLS INC.

DATA UNIT: INCH  
3RD ANGLE PROJECTION

DWG NO	RM_03G1A-N^A@\$##D	REV	-
MODEL CODE	RM_03G1A-N^A@\$##D		
TITLE	2 Speed D03 Sandwich Module M/O A Direct Acting Spool PC Flow Control		

ITEM QTY		DESCRIPTION
1	1	Manifold Body
2	1	Seal Plate
3	1	[Flow Control] Fully adjustable pressure compensated flow control valve with reverse flow check
4	1	[Solenoid] 2-way, solenoid-operated directional spool valve
5	1	Coil
6	1	Connector
7	1	Nameplate
8	4	Screws





### MODEL CODE BREAKDOWN

**RM\_03G1A-N^A@\$\$#D**

- Material Code ( \_ ) A Aluminum Body  
D Ductile Iron Body
- Adjustment Code ( ^ ) L Standard Screw
- Seal Material Code ( @ ) N Buna  
V Viton
- Rest Condition Code ( \$ ) C Normally Closed (Slow)  
H Normally Open (Fast)
- Voltage Code ( ## ) 11 110 Vac  
24 24 Vdc

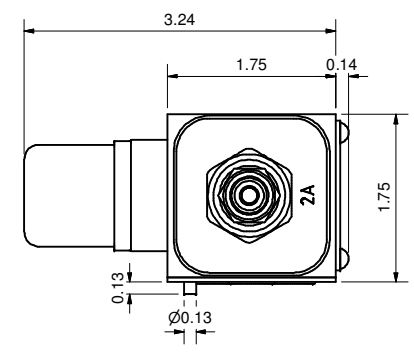
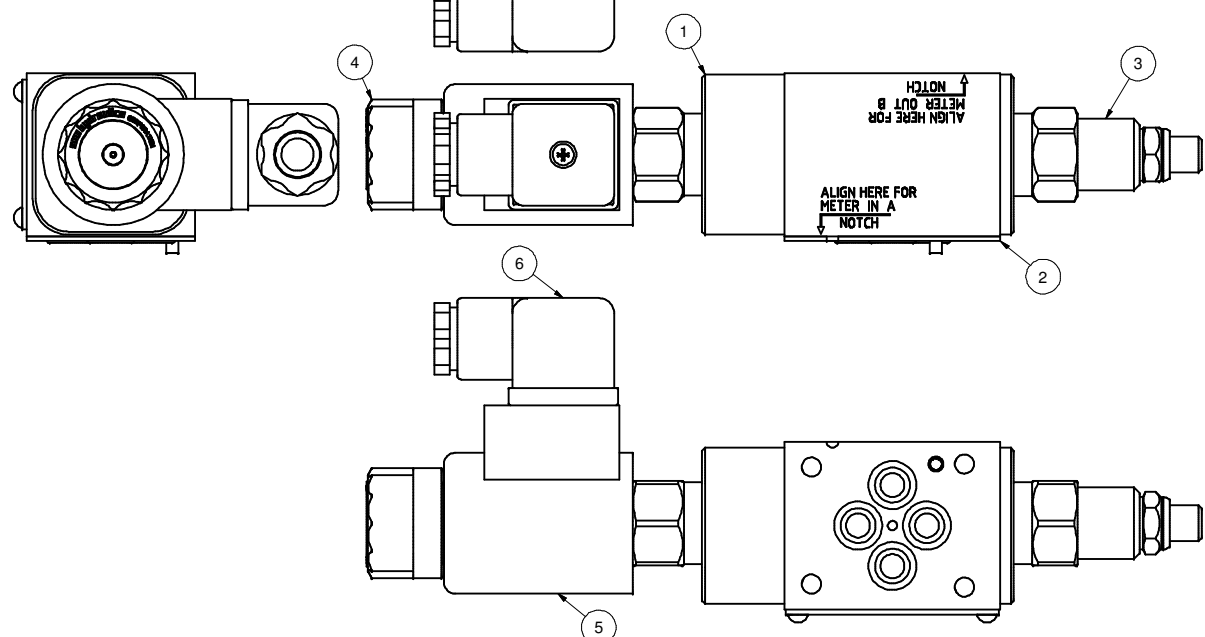
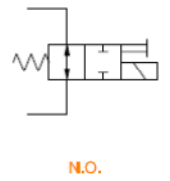
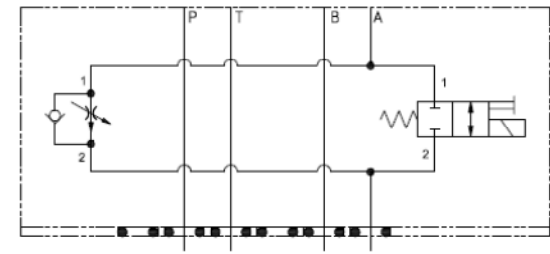
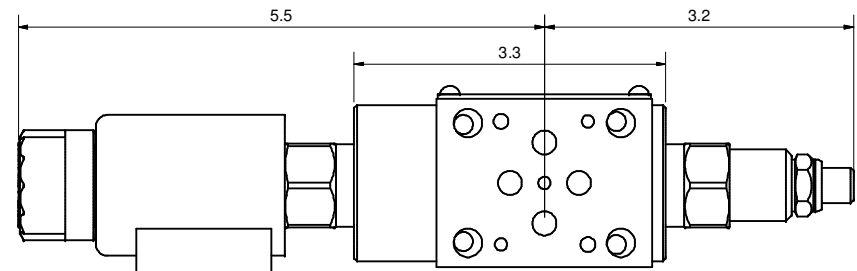


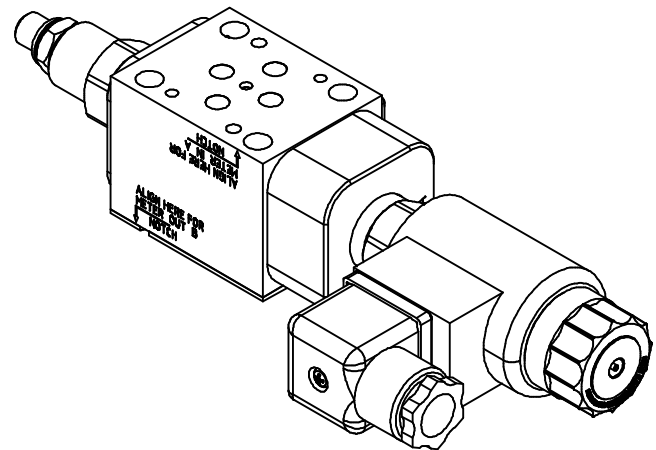
**PROPRIETARY NOTICE**  
THIS DRAWING DESCRIBES A PROPRIETARY PRODUCT OF LYNCH FLUID CONTROLS INC. WHICH MAY NOT BE REPRODUCED IN WHOLE OR IN PART NOR GIVEN TO A THIRD PARTY WITHOUT WRITTEN PERMISSION FROM LYNCH FLUID CONTROLS INC.

DATA UNIT: INCH 3RD ANGLE PROJECTION

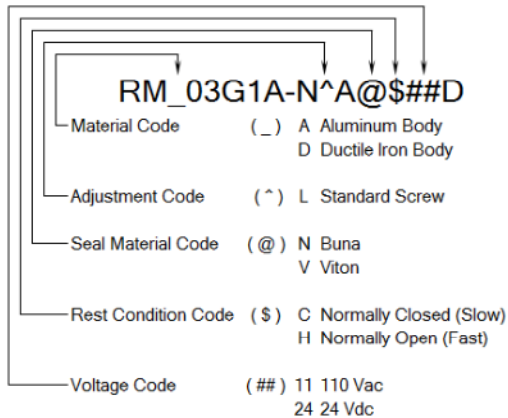
DWG NO	RM_03G1A-N^A@\$\$#D	REV	-
MODEL CODE	RM_03G1A-N^A@\$\$#D		
TITLE	2 Speed D03 Sandwich Module M/I A Direct Acting Spool PC Flow Control		

ITEM		QTY		DESCRIPTION
1	1			Manifold Body
2	1			Seal Plate
3	1			[Flow Control] Fully adjustable pressure compensated flow control valve with reverse flow check
4	1			[Solenoid] 2-way, solenoid-operated directional spool valve
5	1			Coil
6	1			Connector
7	1			Nameplate
8	4			Screws





### MODEL CODE BREAKDOWN

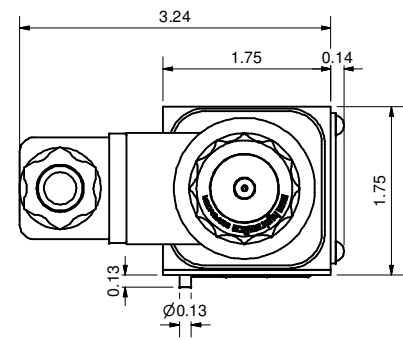
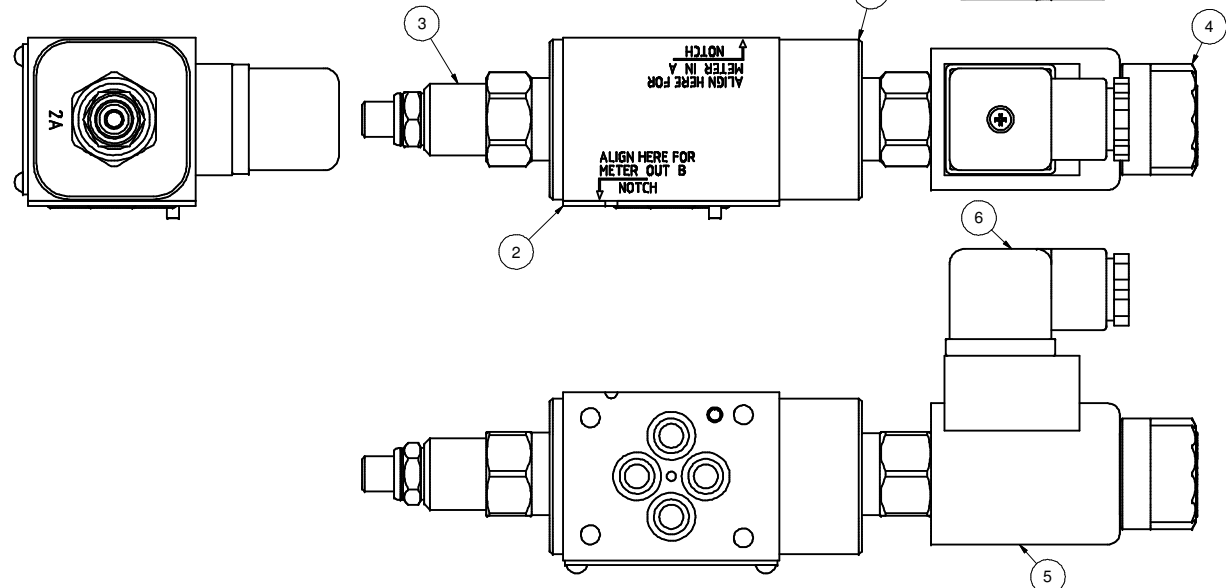
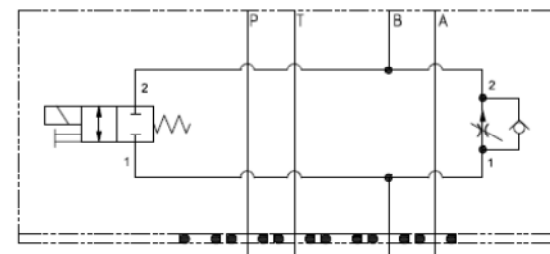
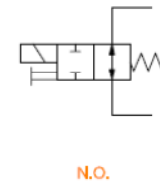
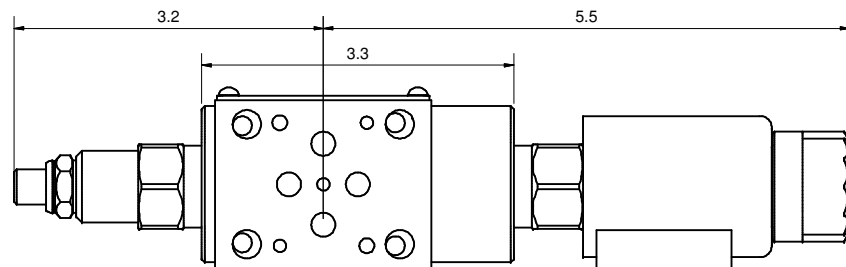


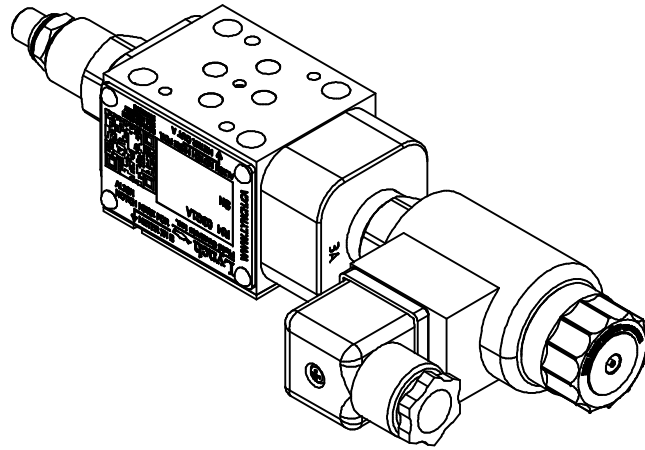
**PROPRIETARY NOTICE**  
THIS DRAWING DESCRIBES A PROPRIETARY PRODUCT OF LYNCH FLUID CONTROLS INC. WHICH MAY NOT BE REPRODUCED IN WHOLE OR IN PART NOR GIVEN TO A THIRD PARTY WITHOUT WRITTEN PERMISSION FROM LYNCH FLUID CONTROLS INC.

DATA UNIT: INCH  
3RD ANGLE PROJECTION

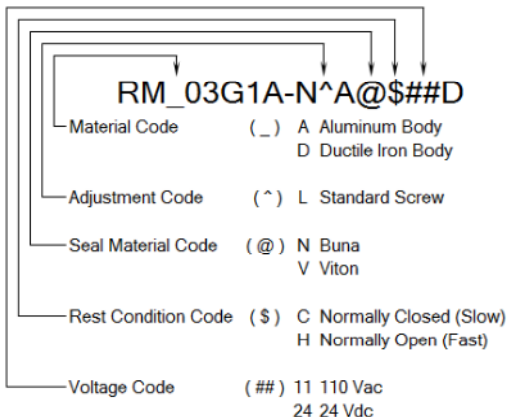
DWG NO	RM_03G1A-N^A@\$##D	REV	-
MODEL CODE	RM_03G1A-N^A@\$##D		
TITLE	2 Speed D03 Sandwich Module M/O B Direct Acting Spool PC Flow Control		

ITEM QTY		DESCRIPTION
1	1	Manifold Body
2	1	Seal Plate
3	1	[Flow Control] Fully adjustable pressure compensated flow control valve with reverse flow check
4	1	[Solenoid] 2-way, solenoid-operated directional spool valve
5	1	Coil
6	1	Connector
7	1	Nameplate
8	4	Screws





### MODEL CODE BREAKDOWN



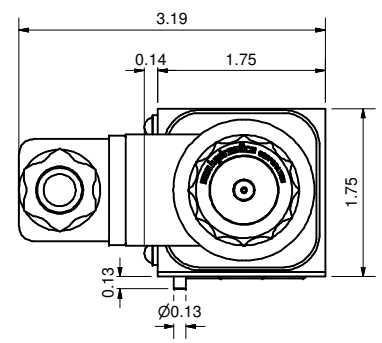
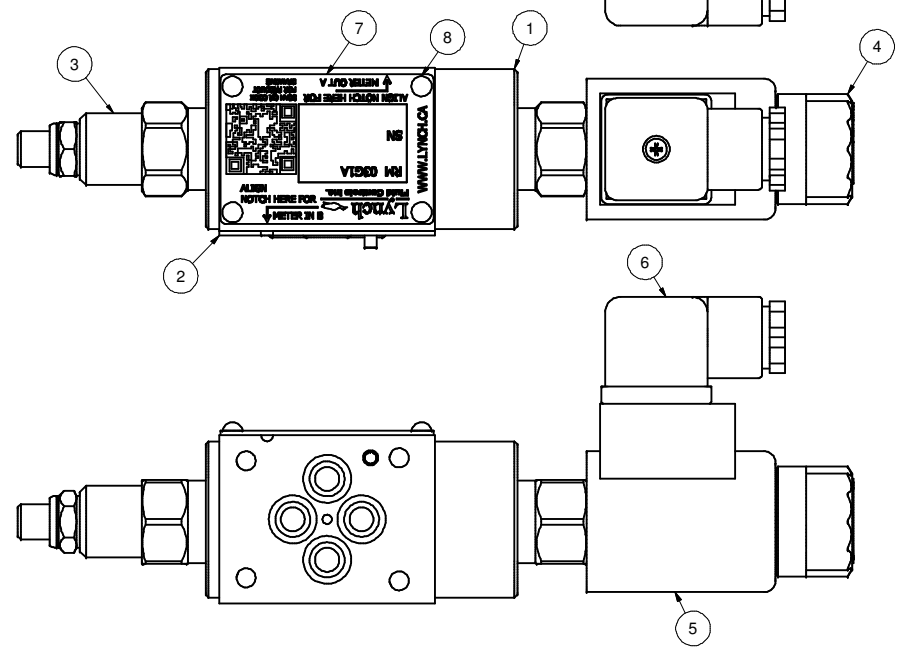
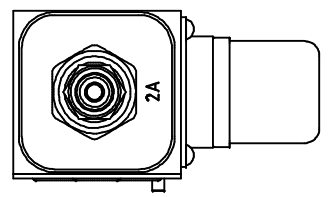
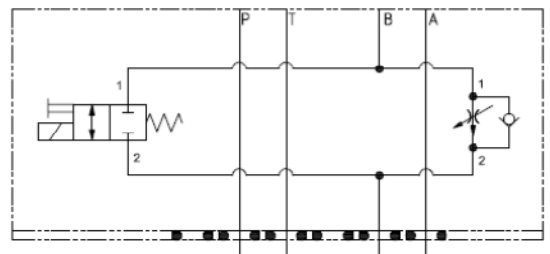
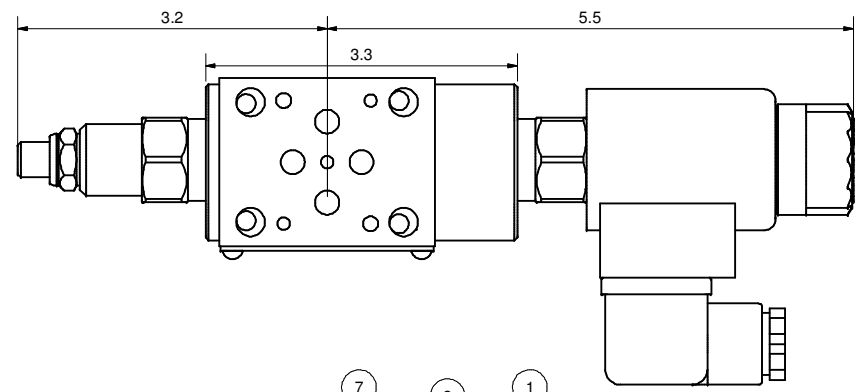
**Lynch**  
Fluid Controls Inc.

**PROPRIETARY NOTICE**  
THIS DRAWING DESCRIBES A PROPRIETARY PRODUCT OF LYNCH FLUID CONTROLS INC. WHICH MAY NOT BE REPRODUCED IN WHOLE OR IN PART NOR GIVEN TO A THIRD PARTY WITHOUT WRITTEN PERMISSION FROM LYNCH FLUID CONTROLS INC.

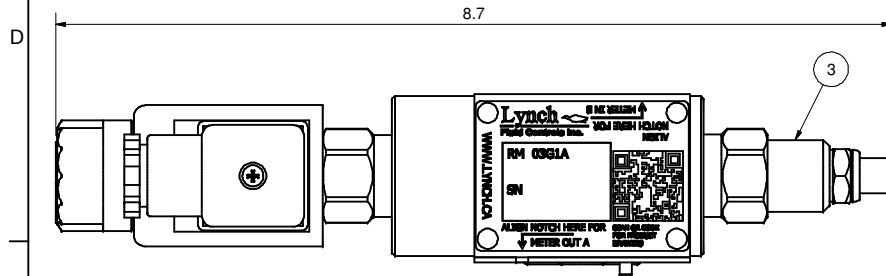
DATA UNIT: INCH  
3RD ANGLE PROJECTION

DWG NO	RM_03G1A-N^A@\$##D	REV	-
MODEL CODE	RM_03G1A-N^A@\$##D		
TITLE	2 Speed D03 Sandwich Module M/I B Direct Acting Spool PC Flow Control		

ITEM QTY		DESCRIPTION
1	1	Manifold Body
2	1	Seal Plate
3	1	[Flow Control] Fully adjustable pressure compensated flow control valve with reverse flow check
4	1	[Solenoid] 2-way, solenoid-operated directional spool valve
5	1	Coil
6	1	Connector
7	1	Nameplate
8	4	Screws

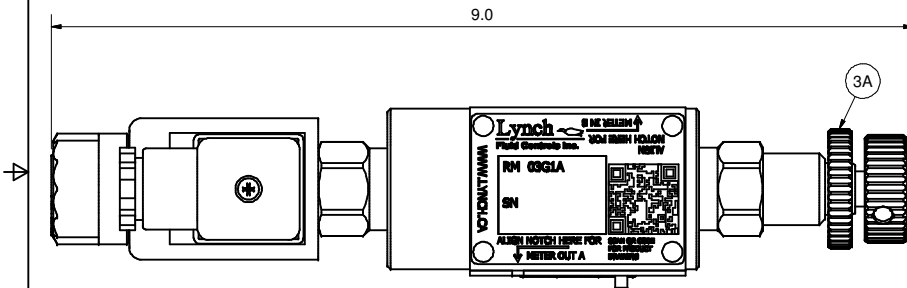


## L - Standard Screw



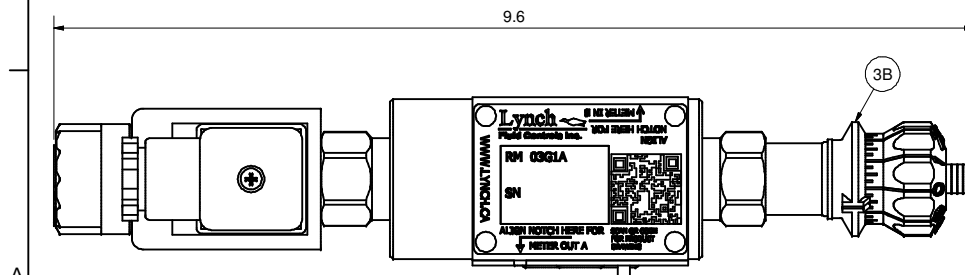
## K - Hand-Knob

Non-Standard Option: Order Standard L control w/ 991 211 Kit



## H - Calibrated Hand-Knob

Non-Standard Option



LYNCH FLUID CONTROLS INC. RESERVES THE RIGHT TO DISCONTINUE MODELS, OR CHANGE SPECIFICATIONS WITHOUT NOTICE OR INCURRING OBLIGATION.

**Lynch**  
Fluid Controls Inc.

PROPRIETARY NOTICE  
THIS DRAWING DESCRIBES A PROPRIETARY PRODUCT OF LYNCH FLUID CONTROLS INC. WHICH MAY NOT BE REPRODUCED IN WHOLE OR IN PART NOR GIVEN TO A THIRD PARTY WITHOUT WRITTEN PERMISSION FROM LYNCH FLUID CONTROLS INC.

DATA UNIT: INCH  
3RD ANGLE PROJECTION

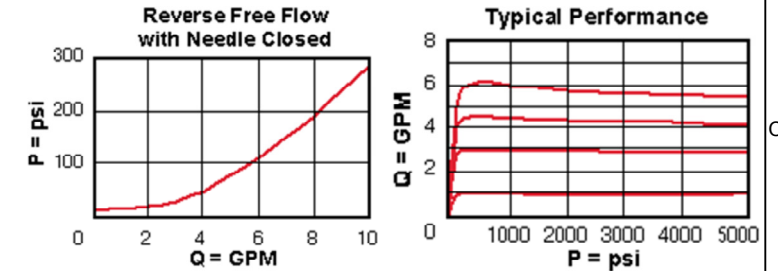
DWG NO RM\_03G1A-N^A@\$\$#D REV -

MODEL CODE RM\_03G1A-N^A@\$\$#D

TITLE  
Technical Data & Non-Standard Options

ITEM QTY		DESCRIPTION
3	1	[Flow Control] Fully adjustable pressure compensated flow control valve with reverse flow check
3A	1	[Flow Control] Fully adjustable pressure compensated flow control valve with reverse flow check [Hand-Knob]
3B	1	[Flow Control] Fully adjustable pressure compensated flow control valve with reverse flow check [Calibrated Hand-Knob]

## Flow Control



## Solenoid

