

MODEL CODE BREAKDOWN

RM_03G1A-O^A@\$##D

- Material Code () A Aluminum Body
D Ductile Iron Body
- Adjustment Code (^) L Standard Screw
- Seal Material Code (@) N Buna
V Viton
- Rest Condition Code (\$) C Normally Closed (Slow)
H Normally Open (Fast)
- Voltage Code (##) 11 110 Vac
24 24 Vdc

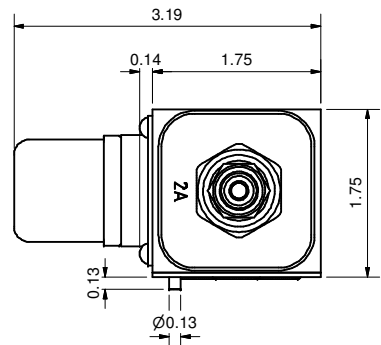
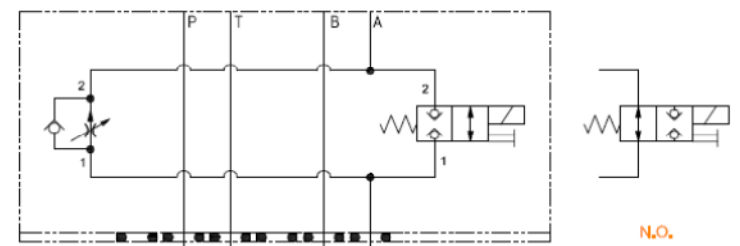
Lynch
Fluid Controls Inc.

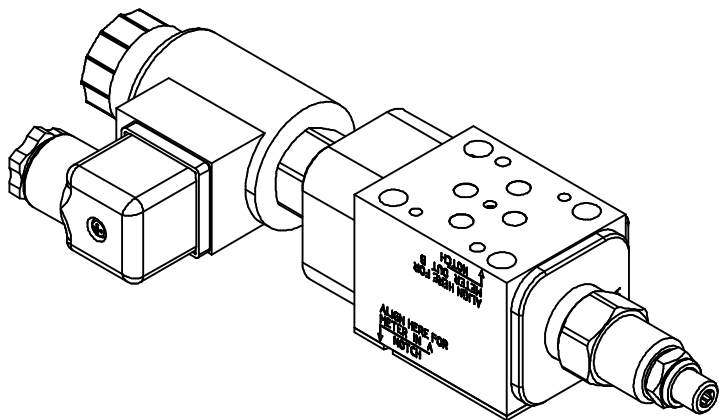
PROPRIETARY NOTICE
THIS DRAWING DESCRIBES A PROPRIETARY PRODUCT OF LYNCH FLUID CONTROLS INC. WHICH MAY NOT BE REPRODUCED IN WHOLE OR IN PART NOR GIVEN TO A THIRD PARTY WITHOUT WRITTEN PERMISSION FROM LYNCH FLUID CONTROLS INC.

DATA UNIT: INCH
3RD ANGLE PROJECTION

DWG NO	RM_03G1A-O^A@\$##D	REV	-
MODEL CODE	RM_03G1A-O^A@\$##D		
TITLE	2 Speed D03 Sandwich Module M/O A Direct Acting Poppet PC Flow Control		

ITEM QTY		DESCRIPTION
1	1	Manifold Body
2	1	Seal Plate
3	1	[Flow Control] Fully adjustable pressure compensated flow control valve with reverse flow check
4	1	[Solenoid] 2-way, direct-acting, solenoid-operated directional poppet valve
5	1	Coil
6	1	Connector
7	1	Nameplate
8	4	Screws





MODEL CODE BREAKDOWN

RM_03G1A-O^A@\$##D

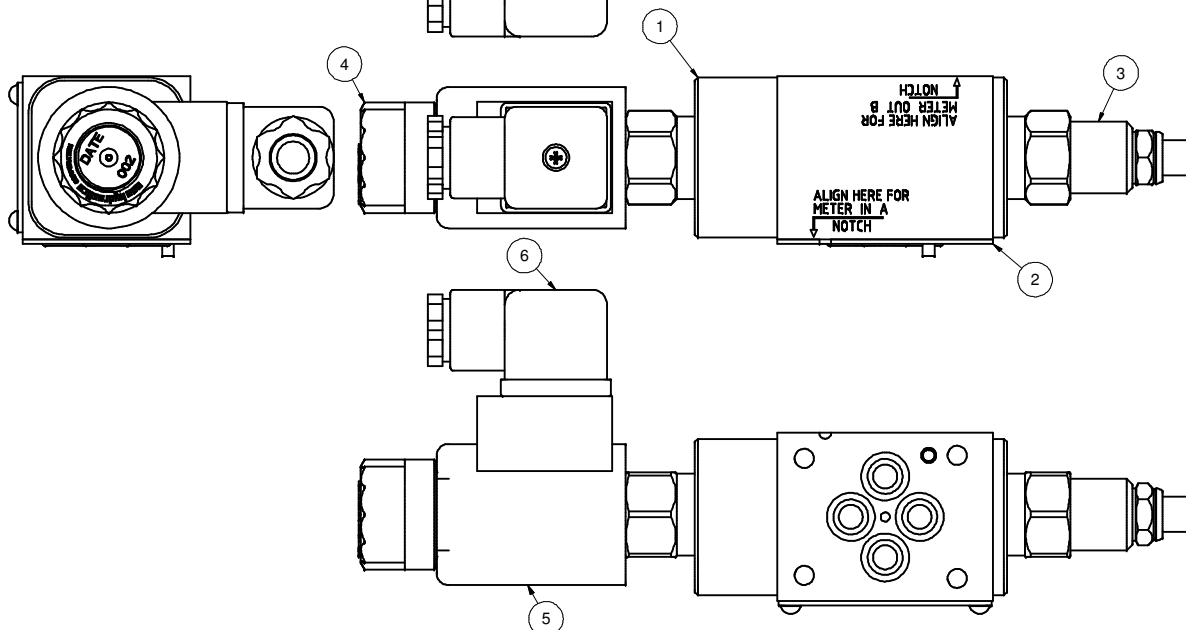
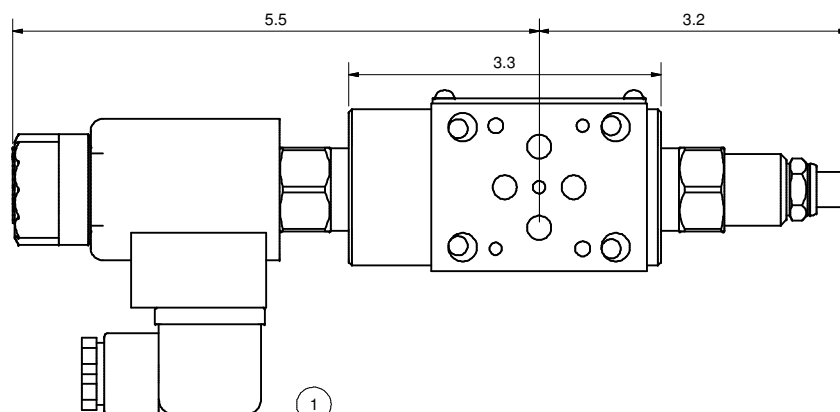
Material Code () A Aluminum Body
D Ductile Iron Body

— Adjustment Code (^) L Standard Screw


—Seal Material Code (@) N Buna
V Viton

—Rest Condition Code (\$) C Normally Closed (Slow)
H Normally Open (Fast)

—Voltage Code (##) 11 110 Vac
24 24 Vdc



PROPRIETARY NOTICE
THIS DRAWING DESCRIBES A PROPRIETARY
PRODUCT OF LYNCH FLUID CONTROLS INC.
WHICH MAY NOT BE REPRODUCED IN WHOLE
OR IN PART NOR GIVEN TO A THIRD PARTY
WITHOUT WRITTEN PERMISSION FROM
LYNCH FLUID CONTROLS INC.

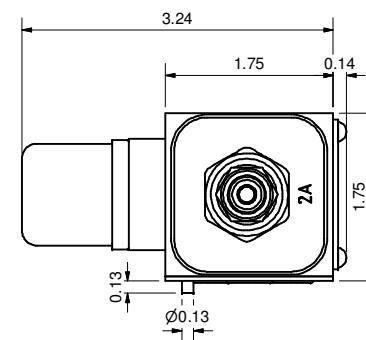
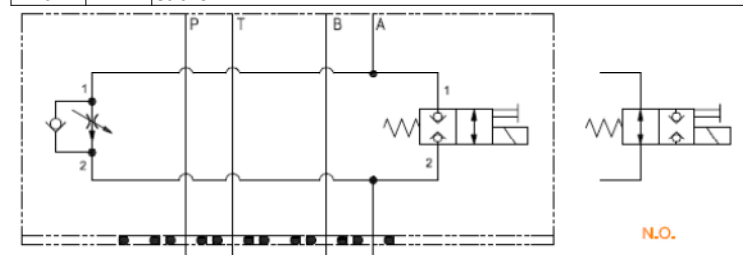
DATA UNIT: INCH	3RD ANGLE PROJECTION	
--------------------	-------------------------	---

DWG NO	REV
RM 03G1A-O^A@\$##D	

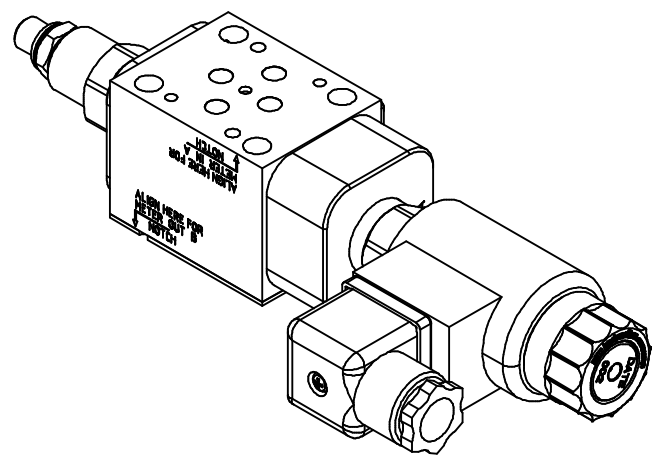
MODEL CODE	RM_03G1A-O^A@\$##D
------------	--------------------

TITLE	2 Speed D03 Sandwich Module M/I A Direct Acting Poppet PC Flow Control
-------	---

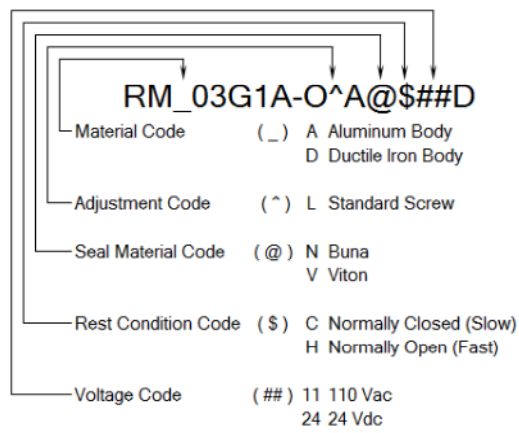
Bill of Material		
ITEM	QTY	DESCRIPTION
1	1	Manifold Body
2	1	Seal Plate
3	1	[Flow Control] Fully adjustable pressure compensated flow control valve with reverse flow check
4	1	[Solenoid] 2-way, direct-acting, solenoid-operated directional poppet valve
5	1	Coil
6	1	Connector
7	1	Nameplate
8	4	Screws



LYNCH FLUID CONTROLS INC. RESERVES THE RIGHT TO DISCONTINUE MODELS, OR CHANGE SPECIFICATIONS WITHOUT NOTICE OR INCURRING OBLIGATION.



MODEL CODE BREAKDOWN



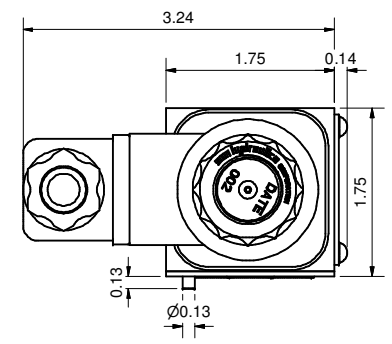
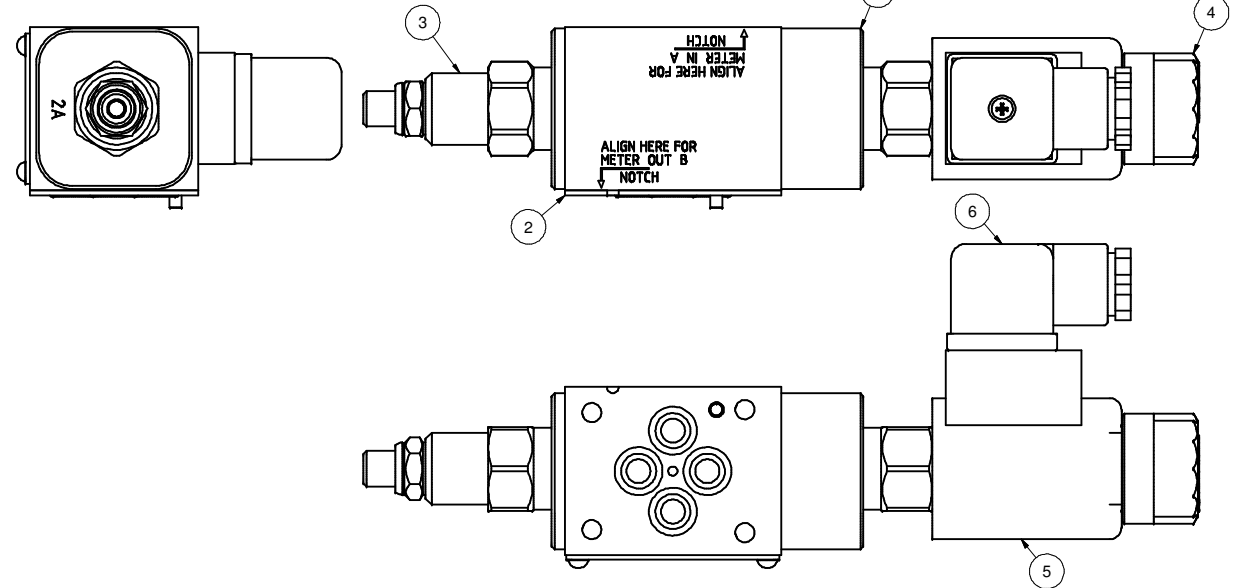
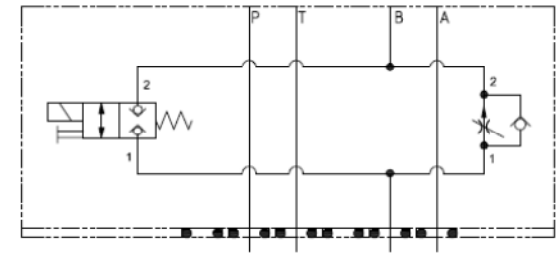
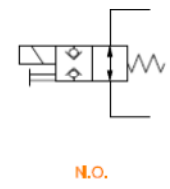
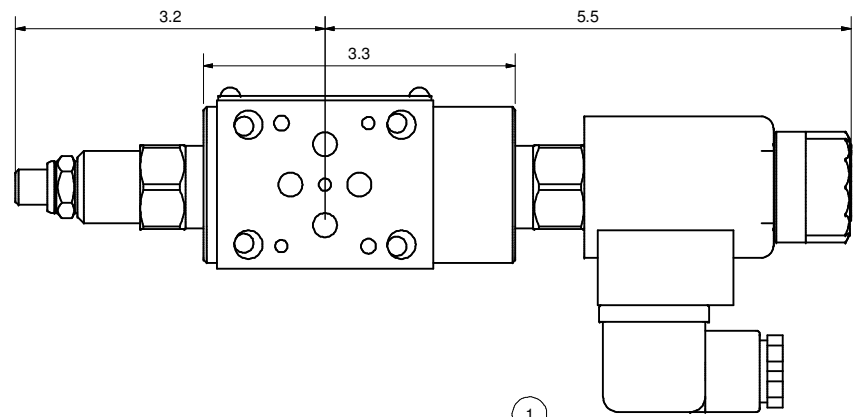
Lynch
Fluid Controls Inc.

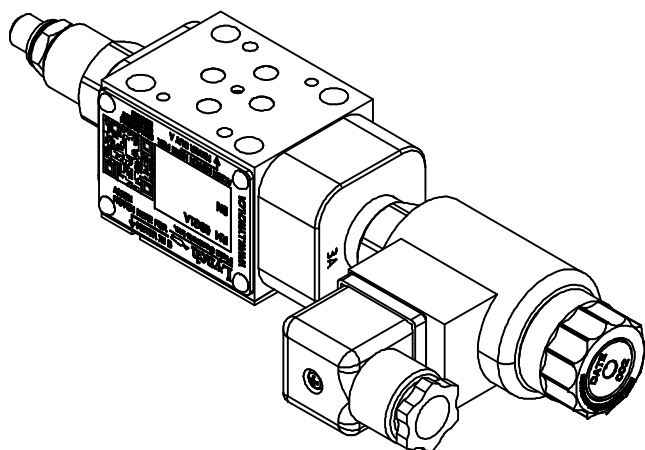
PROPRIETARY NOTICE
THIS DRAWING DESCRIBES A PROPRIETARY PRODUCT OF LYNCH FLUID CONTROLS INC. WHICH MAY NOT BE REPRODUCED IN WHOLE OR IN PART NOR GIVEN TO A THIRD PARTY WITHOUT WRITTEN PERMISSION FROM LYNCH FLUID CONTROLS INC.

DATA UNIT: INCH
3RD ANGLE PROJECTION

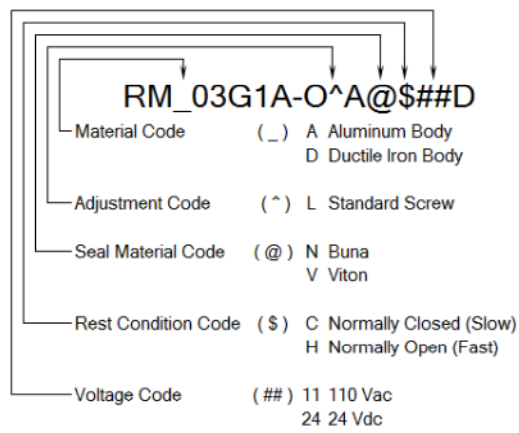
DWG NO	RM_03G1A-O^A@\$##D	REV	-
MODEL CODE	RM_03G1A-O^A@\$##D		
TITLE	2 Speed D03 Sandwich Module M/O B Direct Acting Poppet PC Flow Control		

ITEM QTY		DESCRIPTION
1	1	Manifold Body
2	1	Seal Plate
3	1	[Flow Control] Fully adjustable pressure compensated flow control valve with reverse flow check
4	1	[Solenoid] 2-way, direct-acting, solenoid-operated directional poppet valve
5	1	Coil
6	1	Connector
7	1	Nameplate
8	4	Screws





MODEL CODE BREAKDOWN



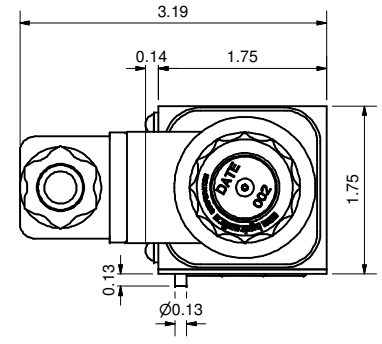
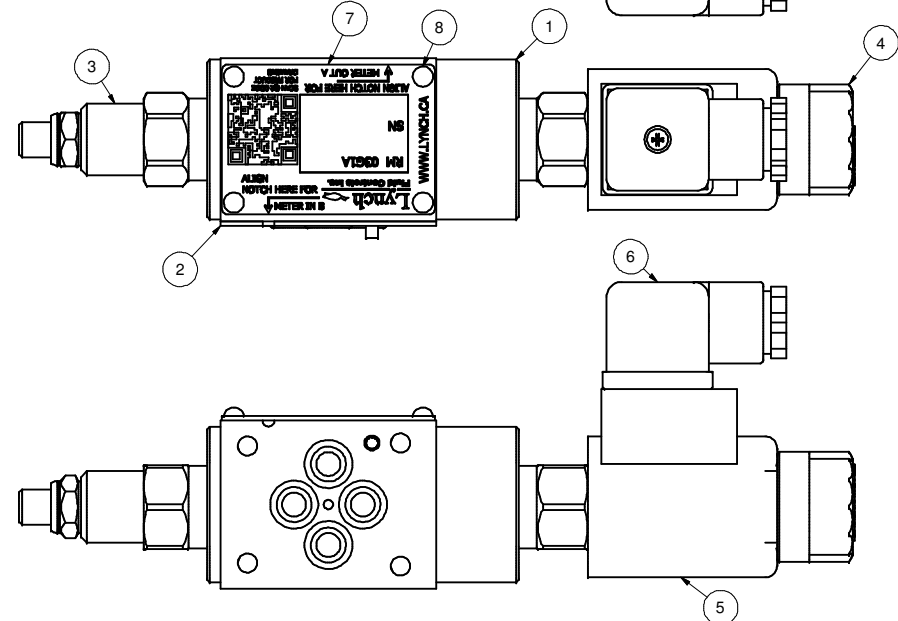
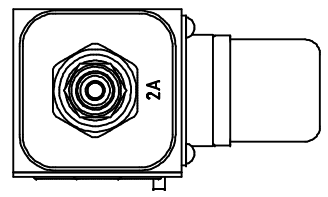
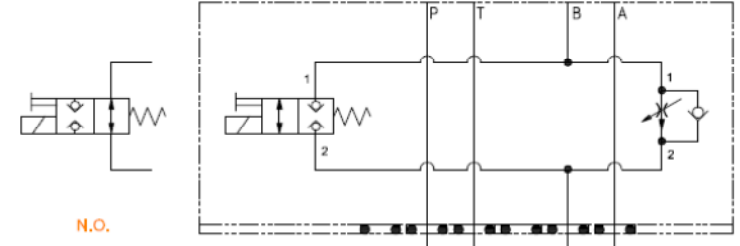
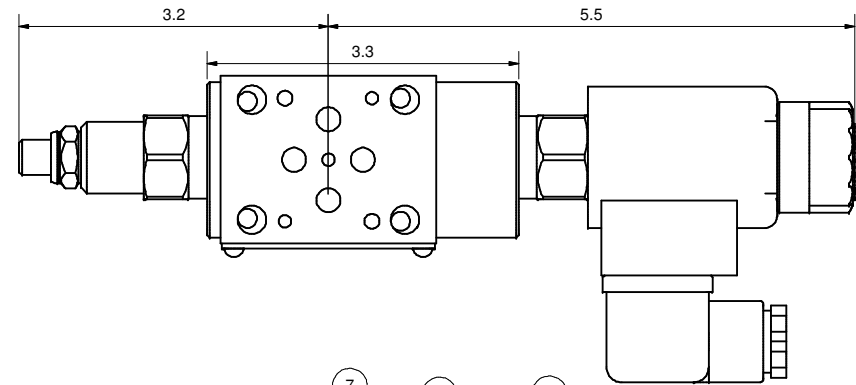
Lynch
Fluid Controls Inc.

PROPRIETARY NOTICE
THIS DRAWING DESCRIBES A PROPRIETARY PRODUCT OF LYNCH FLUID CONTROLS INC. WHICH MAY NOT BE REPRODUCED IN WHOLE OR IN PART NOR GIVEN TO A THIRD PARTY WITHOUT WRITTEN PERMISSION FROM LYNCH FLUID CONTROLS INC.

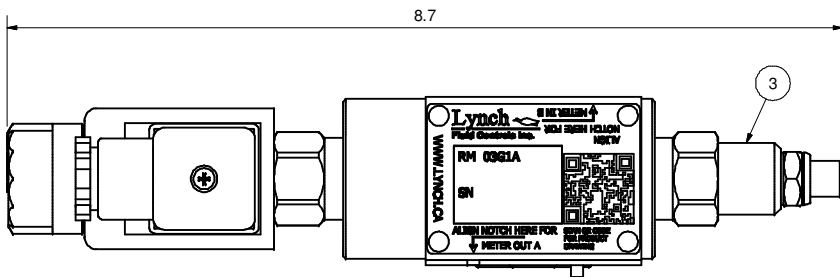
DATA UNIT: INCH
3RD ANGLE PROJECTION

DWG NO	RM_03G1A-O^A@\$##D	REV	-
MODEL CODE	RM_03G1A-O^A@\$##D		
TITLE	2 Speed D03 Sandwich Module M/I B Direct Acting Poppet PC Flow Control		

ITEM QTY		DESCRIPTION
1	1	Manifold Body
2	1	Seal Plate
3	1	[Flow Control] Fully adjustable pressure compensated flow control valve with reverse flow check
4	1	[Solenoid] 2-way, direct-acting, solenoid-operated directional poppet valve
5	1	Coil
6	1	Connector
7	1	Nameplate
8	4	Screws

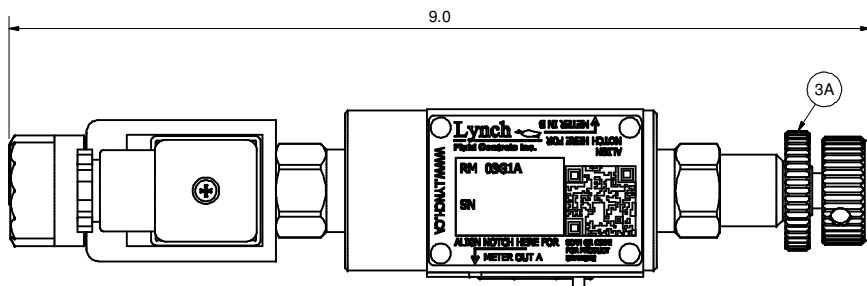


L - Standard Screw



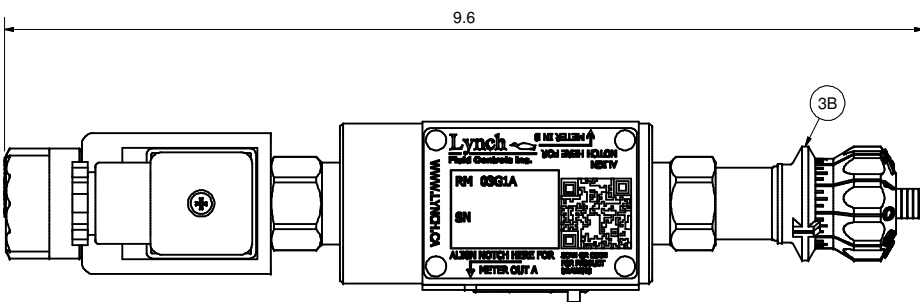
K - Hand-Knob

Non-Standard Option: Order Standard L control w/ 991 211 Kit



H - Calibrated Hand-Knob

Non-Standard Option



Lynch
Fluid Controls Inc.

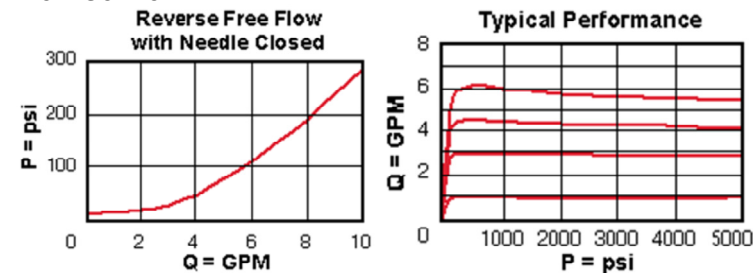
PROPRIETARY NOTICE
THIS DRAWING DESCRIBES A PROPRIETARY PRODUCT OF LYNCH FLUID CONTROLS INC. WHICH MAY NOT BE REPRODUCED IN WHOLE OR IN PART NOR GIVEN TO A THIRD PARTY WITHOUT WRITTEN PERMISSION FROM LYNCH FLUID CONTROLS INC.

DATA UNIT: INCH
3RD ANGLE PROJECTION

DWG NO RM_03G1A-O^A@\$\$#D
MODEL CODE RM_03G1A-O^A@\$\$#D
TITLE Technical Data & Non-Standard Options

ITEM QTY		DESCRIPTION
3	1	[Flow Control] Fully adjustable pressure compensated flow control valve with reverse flow check
3A	1	[Flow Control] Fully adjustable pressure compensated flow control valve with reverse flow check [Hand-Knob]
3B	1	[Flow Control] Fully adjustable pressure compensated flow control valve with reverse flow check [Calibrated Hand-Knob]

Flow Control



Solenoid

